

LEXINGTON

a better life



VISITOR'S
GUIDE
2025





MODERN TECHNOLOGY, STATE-OF-THE-ART OPERATING ROOMS, COORDINATED CARE. ALL CLOSE TO HOME.

With expert surgeons and experienced clinical staff, supported by cutting-edge technology, we're dedicated to ensuring the best outcomes for you. Your health and well-being are our top priorities!

www.lexingtonregional.org



Your Community. Your Health. Your Care.



CONTENTS

Welcome.....	4
City Services.....	5
Historic Transportation.....	7
History	10
Business & Industry.....	12
Fun & Entertainment.....	13
Attractions.....	14
Government.....	17
Quality Education	18
Health Care	19
Ad Contents.....	20
Business Directory.....	21

Official publication of the Lexington Convention and Visitor's Bureau in cooperation with the Lexington Area Chamber of Commerce.

Cover photo by Brian Neben



Photo by Brian Neben

CELEBRATING 150 YEARS

Looking back, moving forward. This is our community.

What are the benefits of joining the Chamber?



The Chamber serves as a focal point for community-wide information, particularly as it applies to business and commerce. When callers or visitors ask us for recommendations, we refer Chamber partners first, initiating opportunities to reach new customers.



Networking can supercharge your connections to the marketplace. The Chamber arranges events where members – including employees – have opportunities to connect business-to-business as well as customer-to-business.



The Chamber's strength is certainly in its partners. By building relationships with local business men and women, the Chamber becomes a united voice for the community.



Partners can enhance their online presence by linking with the Chamber's 2,000+ Facebook friends, in addition to our connections on other social media sites. We will share events and good news from our partners, reaching up to 3,000 more followers.



On the Chamber's website is one more way customers find you. Our partner businesses are listed alphabetically and also by category, all searchable and user-friendly. Member businesses may select up to five categories that help customers quickly find what they are searching for.



We also list our partner businesses in the annual Lexington Area Visitors Guide, getting business names in front of approximately 2,000 tourists and newcomers each year.



Business partners can add events to the Chamber's online Community Calendar for free. We'll even help you do it.



New Chamber partners get instant publicity with the option of a ribbon-cutting and promotion through email and on social media.



The Chamber offices - also Lexington's Visitor Center - houses a business card display to share our partner's contact with visitors and newcomers. Partners can also display brochures in the office.



Sponsoring events puts your business in the spotlight while showing support for the Chamber, the community and customers. Yes, sponsorship will get you noticed in the best way.



Chamber Bucks - We know that when folks shop local, they support the Lexington economy. Chamber partners can help promote the "shop local" concept by giving and redeeming Chamber Bucks.

PROMOTE – INFORM – CONNECT – ADVOCATE – EDUCATE – PARTNERSHIP

WELCOME

Welcome to Lexington

The mission of Lexington Area Chamber of Commerce is to create and maintain a favorable business climate in the Lexington area by representing the collective interest of business and by becoming involved in other aspects of the community that affect our quality-of-life.

WHERE BUSINESS AND COMMUNITY CONNECT

LEXINGTON

a better life

Photo by Brian Neben



Mac's Creek
Winery • Cider • Brewery
[WWW.MACSCREEK.COM](http://www.macscreek.com)
Lexington, Nebraska

Family • Sustainability • Community
Visit our tasting room north of Lexington! Open 12-7pm
43315 Road 757, Lexington • 308.324.0440 • macscreek.com



LOUDEN'S
MEN'S BIG & TALL
DRESS CLOTHES

Your one stop shop for all your western wear needs for the entire family!

LOUDEN'S
Buggy Whip

504 N. Washington • Lexington • 308.324.3451

CITY SERVICES

Lexington is governed by a five-member elected City Council. Regular meetings of the City Council are on the second and fourth Tuesdays at 5:30 p.m. The city employs a professional manager who oversees day-to-day operations. Lexington Utilities System provides or administers electricity, water, sewer and trash removal.

Lexington Public Library
907 N Washington Street,
308-324-2151

Lexington's 18,528 square feet Public Library opened in late 2005, replacing the previous 40-year-old 4,950 square feet facility. Besides being a beautiful public structure, the Lexington Public Library offers public use computers, free wi-fi, and a growing makerspace. There are also four public meeting rooms, private study rooms, a young adult space, and a children's area for story time and other programming. An updated color scheme, furniture, and signage was added to the library in 2022. The library regularly brings in authors, musicians, storytellers, and other expert speakers to enhance lifelong learning opportunities for

residents. YOUR Lexington Public Library—a place to belong, connect, explore, learn, and grow.

Parks & Recreation

Lexington is home to eight public parks spanning over 100 acres of outdoor recreation space. Two of the largest parks feature renovated lakes with handicap-accessible fishing piers and new walking trails, stocked with fish provided by the Nebraska Game & Parks Commission. Recreational amenities across the city include:

- Nine outdoor tennis courts
- Four competition ball fields
- Multiple soccer fields
- Basketball and volleyball courts
- Frisbee golf
- A skate park
- A driving range
- A newly added splash pad
- Walking trails
- Numerous picnic shelters and playgrounds

Picnic shelters are available for reservations, including the Lexington Veterans Memorial Pavilion and Amphitheatre, which was completed in 2024.



FAT DOGS

- REWARDS PROGRAM
- SAFE & SECURE PUMPS
- GREAT FUEL PRICES
- HOT FOOD & COLD DRINKS

YOU ARE NOWHERE

SCAN THE CODE
& VISIT OUR SITE!

HomesteadBank
your journey. your bank.

202 E. 7th • Lexington, NE
308-324-6358

915 Meridian • Cozad, NE
308-784-2000

www.homestead.bank

HomesteadInsurance
your journey. your peace of mind.

202 E. 7th • Lexington, NE
308-324-6897

915 Meridian • Cozad, NE
308-784-2009

Disclosure: Insurance or annuity products are *Not FDIC Insured *Not Guaranteed by the Bank *Not an obligation of any Depository Institution or any affiliate of any Depository Institution *Not Insured by any Government Agency and may have investment risk including possible loss of value.

The Lexington Family Aquatic Center offers a lap pool, a zero-depth pool with a water slide, and a splash pad for family-friendly water recreation.

Indoor facilities include:

- An indoor hitting complex for baseball and golf
- A 27,000-square-foot indoor Fieldhouse for turf sports
- The newly constructed 29,000-square-foot Racquet Center (completed in 2024), featuring four tennis courts and eight pickleball courts

Grand Generation Center
407 E 6th Street, 308-324-2498

The Grand Generation Center (GGC), Lexington's senior center, is open Monday through Friday, 7:30 a.m. to 5:00 p.m.

Services and activities include:

- Affordable public meals are served daily from 11:30 a.m. to 12:45 p.m.
- Games, crafts, exercise opportunities, and bingo
- The Meals-on-Wheels program for homebound residents, supported by a dedicated team of volunteers

The GGC is a vital community resource providing both social engagement and

essential services for Lexington's senior population.

Downtown Revitalization

In 2010, Lexington initiated a Downtown Revitalization Project. Spurred by a \$350,000 Community Development Block Grant (CDBG), both public and private improvements were made. Adding local contributions, more than \$600,000 was invested in Lexington's downtown. Subsequently the City secured CDGB funding to make additional improvements in and around the downtown area, including street and sewer upgrades, and renovation of the downtown Majestic Theatre.

Dawson County Opportunity Center

1501 Plum Creek Parkway

In 2010, the City of Lexington took the lead in developing the Dawson County Opportunity Center. Once a vacated "big-box store," it's now a buzzing hive of activity. DCOC is home to the Lexington campus of Central Community College, the Lexington Area Chamber of Commerce, a branch of the Nebraska Department of Labor, Lexington Public Schools Early Learning Academy, Dawson County Family Partners, and a regional call center for Nebraska Department of Health & Human Services.



Smarter Insurance for Agriculture.®




Chase Wolf
Agent

Clay Patton
Sales Associate

Lexington, NE
308.324.4000



Farm & Ranch | Commercial Ag | Crop | Workers' Comp | Succession Planning

Farm Bureau Property & Casualty Insurance Company,* Western Agricultural Insurance Company,* Farm Bureau Life Insurance Company*/West Des Moines, IA. *Company providers of Farm Bureau Financial Services. PR-SM-A (2-24)

Applications are being accepted for the
Lexington Housing Authority's




* EASTLAWN APARTMENTS * EASTLAWN ADDITION
* EASTLAWN EAST

Maintenance Free apartment living

* SCATTERED SITE RENTAL HOMES

* VOUCHER RENTAL ASSISTANCE TO PRIVATE LANDLORDS

* LEGEND OAKS 2 AND 3-BEDROOM TOWNHOMES

We have rental assistance programs for the elderly, disabled, handicapped and income eligible families and singles.

Lexington Housing Authority

609 East Third Street, Lexington, NE 68850
324-4633; TDD 324-6619

HISTORIC TRANSPORTATION

Lexington is at the crossroads of several highways. Highway 30 and Interstate 80 are the main east-west by-ways across Nebraska, while Highways 283 and 21 connect locations from South Dakota to Kansas. Travelers in the past also made their way through Dawson County using one or more of five trails.

Oregon Trail

Possibly the most well-known trail made its way through Dawson County, the Oregon Trail. The route was the most widely used of all the trails, with more than half a million people using the route for over 25 years. Many

of the area's early communities can trace roots to the trail.

Pony Express Route

A symbol of growth westward during the 1800s, the Pony Express was the first link to early settlers. The service was short-lived, operating from 1860-1861, delivering between St. Joseph, MO and Sacramento, CA until the advent of the telegraph.

Mormon Trail

Nearly 100,000 early adventurers crossed near the future site of Lexington by following the Mormon Trail. The trail loosely followed the north bank of the Platte River, which later proved to be a



viable footprint for the Lincoln Highway and Interstate 80.

Lincoln Highway

The nation's first transcontinental auto route ran along the Platte River. U.S. Highway 30, recognized as the Lincoln Highway, still serves as an east-west route across Nebraska.

Union Pacific Railroad

The Iron Road was the name given to the first transcontinental railroad. In 1865, Union Pacific began laying rails along the Great Platte River Road and promoted settlement by selling land in the fertile Platte River Valley.

Tyson Foods™

Tyson Foods is proud to be a part of the Lexington community.

LEARN MORE AT [TYSONFOODS.COM](https://www.tysonfoods.com)

PLATTE VALLEY AUTO

LEXINGTON • KEARNEY

4th & Jefferson • 4210 N. 2nd Ave.

Lexington, NE • Kearney, NE

308-324-5619 • 308-237-2171

www.plattevalleyauto.com • Find us on Facebook 



Where everybody gets a great deal ...
... and a great deal more!

- Factory Certified Sales & Leasing
- Factory Certified Parts Department
- Factory Certified Service Department



1111 Plum Creek Parkway - Lexington, NE

(308) 324-2306 • 1 (888) 324-2306

www.heartlandchevy1.com

Heartland

CHEVROLET
LEXINGTON, NE





Buy and sell with confidence.

Since 1992, our mission has been simple:

Serve communities and their wonderful people with genuine care, honesty, and expertise in all things real estate.

You can buy or sell with confidence, knowing that your real estate goals are in the hands of the *best!*



Voted the BEST Real Estate Company
Home of the BEST REALTOR®
2022, 2023, 2024

Start your journey with us today!

- 📞 Call Us Today: (308) 324-5581
- 🌐 Visit Us Online: bharealestate.com
- 📍 Stop By: 707 E Pacific St, Lexington
- ✉ Email Us: info@bharealestate.com



THE HOME AGENCY

Voted Best Insurance Agency in 2022, 2023 & 2024



Jim Baldonado,
Voted Best Insurance Agent in 2022, 2023 & 2024



📞 800.245.4241
🌐 thehomeagency.com

HISTORY

Lexington, located in Dawson County, has a very rich history. It was first established as a frontier trading post in 1860 by Daniel and Louisa Freeman. It sat along Plum Creek across from a Pony Express station south of the Platte River. They provided goods to the people traveling along the Oregon and California trails and traded with the many Indian tribes that were still in the area. Louisa writes in her diary that they got along well with the Indians though many of the white settlers did not and as a result much of Plum Creek fell victim to several attacks. The most famous being the Plum Creek Massacre of 1864 and the Turkey Leg raid of 1867. The Plum Creek Massacre has been portrayed in a book called "Captive of the Cheyenne" written by Russ Czaplewski and published by the Dawson County Historical Society. It tells the true account of Nancy Jane Morton's capture by the Cheyenne Indians and the attack on her wagon train.

When the Union Pacific Railroad was built through Dawson County, the Free-

mans moved their store across from the new depot. The town was called Plum Creek. Louisa writes in her diary that their store was on the first level of their new big house, and they boarded newcomers on the second level. Daniel Freeman became the first county clerk and operated the first Plum Creek newspaper called the "Dawson County Banner." Daniel threw himself into bringing people from the east to settle this small town of Plum Creek and was often away from home. It was during one of these trips that he drowned in the Platte River. Louisa and her children remained in the Plum Creek vicinity until she died at the age of 86.

With the building of the Union Pacific Railroad and the rise of the locomotive, the small town of Plum Creek began to expand. People came from all over the United States and settled in Dawson County. I.P. "Print" Olive, a cattleman from Texas, was drawn by the vast prairies central Nebraska had to offer. His family, including his parents and a few siblings,



settled in Plum Creek and quickly became a prominent family in the area. Ira Olive, Print's brother, was more of a businessman while Print and their younger brother Bob, loved the life of the cowboy and ran their cattle business.

But times were changing as more and more homesteaders settled the area and the cattleman and farmers argued over land rights. One such argument between the Olive family and two homesteaders ended with Bob Olive be-

Trius
Federal Credit Union

TRI-US YOU'LL LIKE US!

Let us show you the credit union difference at Trius. Locally owned and operated for over 55 years. Trius is here to help you with all of your savings, checking and loan needs. Proudly serving Lexington, Kearney and the surrounding area.

308-234-9311 | www.triusfcu.com

Federally insured by the NCUA.

EQUAL HOUSING LENDER

THE NAUTICAL ROSE

2 Lakeview Acres Dr 14
Johnson Lake, NE 68937

Restaurant • 308-785-4031
Marina • 308-785-4032

info@thenauticalrose.com

Follow us on Social Media

- nautical-rose
- nauticalrosemarina
- Nautical Rose

Scan for a list of events

ing shot and killed. In vengeance, Print Olive shot and hanged the homesteaders. A crime he would pay for in the Nebraska State Penitentiary. This caused quite a stir in the little town of Plum Creek and the story was later made into a book called "The Ladder of Rivers" by Harry E. Chrisman.

Plum Creek quickly became known as a "cowboy" town. Even though it continued to grow, and business was booming, the community became worried that it would soon have a bad name, and nobody would want to settle in a town filled with scalawags and gun fighters. Several of the community leaders got together and decided to rename the town. Maybe if it had a more "regal" name things would change. In 1889, by a write-in vote, the town name was changed to Lexington.

With the construction of a new bridge over the Platte River south of Lexington and the designation of Lexington as the county seat the community soon became a trading hub. To accommodate all the new people coming into town the community leaders once again came together to build a new luxurious hotel in 1890 called "The Cornland." It was known as the best hotel between Omaha and Denver and offered all the latest amenities such as steam heat and



gas lighting.

Throughout the years Lexington has seen many changes in business and population. Some good, some bad, but it continues to grow and draw people from a wide variety of ethnic backgrounds just as it did when it was the small town of Plum Creek. The Overland Trails were taken over by the railroad and then came the motor car and Lexington changed yet again to accommodate the Lincoln Highway traffic. Motels, diners, and gas stations sprang up along what we now refer to as Highway 30. In the 1960s, the interstate system came through south of Lexington causing the town to grow rapidly in that direction. Overland commerce has never stopped in Lexington, it's merely changed.

In 1973, Lexington was named an "All American City" by the National Civic League

with Dawson County receiving the "All American City" award in 1993. It is the only county in Nebraska to be so honored. Lexington also has three buildings listed on the National Register of Historic Places: The Olive House at 401 E 13th St., the Dawson County Courthouse located at 7th and Washington St., and the H.V. Temple House at 305 E. 13th St. The downtown still has brick streets, and

many structures have been restored, such as the Majestic Theatre, which was taken on as a project by the Lexington Public School system and is now operated by the school and a group of volunteers.

To learn more about Lexington's history visit the Dawson County Historical Museum and the Heartland Museum of Military Vehicles where the area's history is proudly displayed!



Burgers, Beer & The Best Wings in Town.

Same **Great** food, **New** dining experience.

Breakfast • Lunch • Dinner

Sports Bar Now Open at 11:00 A.M. Saturday & Sunday

308-324-6641 • kirksrestaurant.com • Like us on Facebook

INTERESTED IN A NEW AG/HOME BUILDING?

Agricultural, Residential, Commercial, Industrial Post/Stud Framed Buildings



Dan Heinemann

Owner

kryptonite_har@hotmail.com

Cell (308) 746-1449

Office (308) 324-7375

704 East Prospect Rd.

Lexington, NE 68850

www.hartransportationinc.com



Transportation Inc.

Building Division

BUSINESS AND INDUSTRY

Lexington's base industry is agriculture because of the abundance and availability of natural resources located in the area: fertile soils, ground-water and a temperate growing season.

Some of the main non-manufacturing employers are:

- City of Lexington and Dawson County
- Dawson Public Power District
- Lexington Public Schools
- Country Partners Cooperative (fertilizer, car care and agronomy divisions)
- Lexington Livestock Com-

mission Co. (livestock auction)

- Plum Creek Medical Group
- Lexington Regional Health Center
- Ridgeway Senior Living
- State of Nebraska Department of Roads

Major manufacturers and industries include:

- Eilers Machine and Welding Inc. (fabricated metal parts, welding and machine repairs)
- Tyson Fresh Meats (beef and related products for a national and export market)



- Orthman by Unverferth Manufacturing (farm implements for the national and export market)
- Darling Ingredients (meat scraps, tallow and hides)
- Designer Craft Woodworking (furniture, cabinetry for national market)
- Veetronix (communications equipment)
- Chief Ethanol Fuels, Inc. (ethanol plant)

The rest of the area's economy revolves around a variety of manufacturing firms, some which create value-added products from the region's agricultural base and some stand-alone products. The service sector includes a variety of motels and retail stores. Lexington is home to many unique specialty shops and ethnic businesses and restaurants.



SERVING DAWSON COUNTY

**SINCE
1960**



**Dan's Sanitation
324-6693 • Lexington**

CASE II
AGRICULTURE
Titan Machinery

**TITAN
MACHINERY**

Power & Precision to Grow®

75481 Road 435 • Lexington, NE 68850
308-324-5553 • 800-248-5523

FUN AND ENTERTAINMENT

There is so much to see and do in Lexington and the surrounding area!

Stock car races begin in March at the Dawson County Raceway.

The Dawson County Fair will be at the Dawson County Fairgrounds in July. Here, youth participate in life-skills contests ranging from cooking, sewing, and photography. Young ranchers compete in livestock shows showing off their sheep, hogs, cattle, dogs and even cats! The carnival is in town, and many vendors and open-class competitions

take place.

August is busy with the "Wings and Wine, Beer & Brats" event at Mac's Creek Winery & Brewery later in the month.

In December, Santa travels to downtown Lexington during the annual Light up Lexington Christmas Parade and visits with children at his house on Saturdays. Fire truck rides are also provided by the Lexington Volunteer Fire Department. There are many events to choose from throughout the entire year!

ANNUAL EVENTS

February

» Chamber/Ag Banquet

March

» Stock Car Races Begin

July

» Dawson County Fair
» Chamber of Commerce Golf Tournament
» Lexington Tennis Tournament

August

» Wings and Wine, Beer & Brats Event
» High School Rodeo

September

» NSRA Finals

October

» Trick or Treat Plum Creek

December

» Light up Lexington Christmas Parade
» Santa Visits and Fire Truck Rides

For the full schedule, visit www.lexcoc.com



Photos by Brian Neben

BUILD YOUR FUTURE AT HOME



HOME FEDERAL BANK



- ✓ Home Loans
- ✓ Agricultural Loans
- ✓ Business Loans
- ✓ Personal Loans
- ✓ Checking Accounts

**201 W 7th St
308.324.2331**



Open an Account Online

homefederalne.bank

ATTRACTIONS

Mac's Creek Winery & Brewery

Mac's Creek Winery & Brewery is family owned and operated by the McFarland's since 2001 and is located one-half mile north of Lexington along the banks of Spring Creek. Enjoy wines, hard ciders, craft beers as well as walking trails, Creekside fire pits, and quaint cottages. Once you arrive, you'll want to stay the entire day!

Stock Car Races

Race fans can enjoy Fast Family Fun on Sundays starting in March at the Dawson County Raceway. "Where Only the Best, Go 3 Abreast!"

Museums

Three museums showcase the intriguing history of Lexington and Dawson County. Aircraft, tanks and trucks make up the approximately 100 vehicles restored at the Heartland Museum of Military Vehicles. Much of this museum is hands-on, with many of the vehicles available for patrons to touch or even sit in.

Historic aircraft, pioneer implements, railroad artifacts, and tons of Lexington and Dawson County history are preserved at the Dawson County Historical Museum. Exhibits outside the main museum building include a rural schoolhouse, log cabin, and

historic church.

The Dawson County Children's Museums is located at 701 Plum Creek Parkway in Lexington. They offer children and adults the opportunity to explore areas of science, math, social studies, and fine arts through free play, exploration, and demonstration.

Biking, Hiking & Sports Facilities

Hiking/biking trails are a popular recreational activity with several trails completed in Lexington as well as the Johnson Lake Trails, located southwest of the city. Johnson Lake Trails is fast becoming a hike/bike destination for users from across the state.

The Optimist Hitting Complex is an indoor hitting facility where future baseball and softball players can practice and participate in lessons and camps.

The Fieldhouse and Driving Range hosts indoor soccer matches and practices as well

as a variety of other planned activities.

The Racquet Center features four tennis courts and eight pickleball courts. This facility is free and open to the public.

The Orthman Community YMCA provides many programs that build a healthy spirit, mind, and body for all. The YMCA also hosts numerous community events throughout the year.

Veterans Memorial Pavilion and Amphitheater

Completed in 2023, Lexington's Veterans Pavilion and Amphitheater is the culmination of years of work and fund-raising by the Lexington Veterans Memorial Committee.

The Pavilion is located at the south end of Kirkpatrick Memorial Park, with the nearest intersection being 7th & Taft Streets. It is surrounded by a pentagon-shaped paved walking path. Each corner



MADLINE'S
CAFÉ & BAKERY

Breakfast & Lunch
Desserts & Specialty Coffees
Gluten Free Options

501 N. Washington St.
Lexington
308-324-9010
Mon-Fri 6:30am-3:30pm



LGC
LAKESIDE GOLF CLUB
JOHNSON LAKE, NE

18-hole Golf Course & Driving Range
Clubhouse with Food & Beverage Service
Offering a wide range of Memberships!

Check us out at: www.playlakeside.com

74839 Hwy 283 • Johnson Lake NE • 308-785-2818



of the pentagon features a lighted kiosk that will present tributes and information for the five branches of the military (Army, Navy, Marines, Air Force and Coast Guard). There is also a Memorial Wall to hold engraved bricks to memorialize veterans (see how to purchase bricks below).

The Pavilion boasts ample parking and the whole complex is completely handi-

capped accessible. The Amphitheater and seating area are sure to become a favorite entertainment spot for years to come.

Camping

Campgrounds are available at Dawson County Fairgrounds, Groves by Riverside and multiple areas around Johnson Lake. There campers are provided with gravel, or cement pads, all available with electrical hookups,



showers, restrooms, a dump station and fish-cleaning stations.

Golf

There are two golf courses near Lexington: Overton, which is a 9-hole course, and Lakeside Golf Club at Johnson Lake, which is an 18-hole course, both with beautiful green landscapes and cool Nebraska breezes to make playing a joy.





The Genuine. The Original.



Overhead Door Company of North Platte™

Weathercraft Roofing

Siding, Gutter & Overhead Door Contractors

2401 E. 8th St.
North Platte, NE 69101

906 W 8th
Lexington, NE 68850

(800) 662-2981



TEC Equipment
Your Best Business Partner

NEW & USED TRUCK SALES, ALL-MAKES PARTS & SERVICE

VOLVO






308-324-7759
TECEQUIPMENT.COM/LEXINGTON

THERE'S A Y IN EVERY FAMILY



The Y: Your Home Away from Home

Whether you're traveling or exploring our area, you're always welcome at the Y! Enjoy access to fitness equipment, group classes, gymnasiums, walking tracks, and so much more. Stop by and connect with your Y family today!

ORTHMAN COMMUNITY YMCA

1207 N. Grant Lexington
308.324.1970 www.ymcaoftheprairie.org



LifeSmiles
Two Rivers
BECAUSE SMILES ARE FOR LIFE!

Healthy Families Nebraska
Two Rivers

Environmental Health
Two Rivers
FOR RESTORATION

Two Rivers PUBLIC HEALTH DEPARTMENT

OD2A
OPIOID DATA TO ACTION

IMMUNIZATIONS
Two Rivers
FOR RESTORATION

DISEASE INVESTIGATION
Two Rivers
FOR RESTORATION

A HEALTHIER COMMUNITY FOR ALL
CALL: 888-669-7154 OR VISIT
OUR WEBSITE: TRPHD.NE.GOV

Primary Electric, Inc.

For All Your Electrical, Heating, And Air Conditioning Needs.
939 W. 7th • Lexington, NE
308-324-2418
 primary.electric@yahoo.com • primaryelectricne.com

MRK INC.

TRUCK WASHOUT & TRANSPORTATION

606 E. Prospect Rd.
P.O. Box 853
Lexington, Nebraska 68850

Office: (308) 324-5790
Fax: (308) 324-3673
mrk@mrklexington.com

DARLING

INGREDIENTS

DEAD STOCK REMOVAL SERVICE

GRAND ISLAND
1-800-652-9381

PALISADE
1-800-652-9320

LEXINGTON
1-800-652-9334

Doran Post Agency

Insurance & Real Estate

**FROM THE FIELD, TO THE FRONT DOOR
WE'VE GOT YOU COVERED.**

**CROP INSURANCE • REAL ESTATE
FARM • HOME & AUTO INSURANCE**

935 W. 7th • Lexington, NE
 308.234.6992 • info@doranpost.com
 www.doranpost.com

GOVERNMENT

Lexington is the county seat of Dawson County. Dawson County operates under a commissioner form of government with five commissioners elected to four-year terms on a staggered basis. The commissioners represent different districts on the board. The county also has a seven-member planning commission with members appointed by the county commissioners to staggered three-year terms.

The City of Lexington operates with the Council-Manager form of government. Council members serve four-year terms. Elected at-large by the public, they in turn select one of the five as mayor for a two-year term. The Council engages the City Manager to oversee the day-to-day operations of the city.

Lexington also has a nine-member planning commission

with members appointed for three-year terms.

The Lexington Police Department has a force of 20 full-time sworn officers, and two civilian office staff. The Lexington Volunteer Fire Department shares space and emergency equipment with the Rural Fire Department, which handles emergencies on a contract basis to surrounding rural areas.

Dawson County Sheriff's Office has a staff of over 60, including deputies, jail staff, office staff and part-time employees. Regular patrol provides protection to rural and residential communities throughout the county.

The county has combined dispatch services with the communities of Lexington, Overton, Cozad, Sumner, Eddyville, Farnam and the Johnson Lake area.

GOVERNMENT OFFICIALS

City Manager
Joe Peplitsch
(308) 324-2341

City Council
John Fagot - Mayor
John Salem
Dora Vivas
Jarod Jacob
Jeremy Roberts

County Commissioners
Richard Zarek
PJ Jacobson
Kevin Swanson
Bill Stewart
Rod Reynolds

State Senator
Teresa Ibach
(402) 471-2805

Governor
Jim Pillen
(402) 471-2244

Lieutenant Governor
Joe Kelly
(402) 471-2256

U.S. House Representative
Congressman Adrian Smith
(308) 384-3900

U.S. Senate Representatives
Senator Deb Fischer
(402) 441-4600

Senator Pete Ricketts
(202) 224-4224



WE SPECIALIZE IN KEEPING YOU AND YOUR FAMILY SAFE.

- I-CAR Gold Class Certified
- OEM Factory Parts
- FREE Loaner Cars



Eustis
BODY SHOP

LOCATED AT 609 NORTH ADAMS
(308) 324-6812 | eustisbodyshop.com

QUALITY EDUCATION



Our diversity is our strength.

Today Lexington Public Schools is the sixteenth largest school district in Nebraska. The district's seven schools welcome more than 3,000 students each day. But for more than a hundred years, Lexington Public Schools has been providing a world-class education for

students.

- Over 40 countries and 20 languages represented by the students at LPS
- Dual Language Program - Half of their daily instruction in English and the other half in Spanish (K-5th)
- Grade Level Campus Concept (Morton Elementary K-1; Sandoz Elementary 2-3; Pershing Elementary 4-5)
- Early Learning Academy for students ages 3 and 4 years old - One of the largest preschool programs in the state of Nebraska, accommodating 90% of the next year's kindergarten class.
- College Program provides students at Lexington High School seventeen (17) dual-credit college courses
- Cognia/AdvancED/NCA Accredited School District since 1914
- Graduation rate of over 90%
- College-going rate of over 70%
- Average class size to teacher ratio: 18:1

LEXINGTON PUBLIC SCHOOLS

Central Office
300 S. Washington
(308) 324-4681

Early Learning Academy
1501 Plum Creek Parkway
(308) 324-1841

Sandoz Elementary
1711 N. Erie
(308) 324-5540

Pershing Elementary
1104 N. Tyler
(308) 324-3765

Bryan Elementary
1003 N. Harrison St.
(308) 324-3762

Morton Elementary
505 S. Lincoln
(308) 324-3764

Lexington Middle School
1100 N. Washington
(308) 324-2349

Lexington High School
705 W. 13th
(308) 324-4691

- School-Community Partnership, shared facilities with Lexington Middle School and the Orthman Community YMCA
- 32 NSAA State Activities Championships
- Largest High School Marching Band in Nebraska with around 200 members

According to Superintendent Dr. John Hakonson, "The diversity of our students and their families has enhanced Lexington by adding to an incredible international presence that you can't get in any other small central Nebraska community. Our students, in

turn, have prospered from the unfailing commitment and support of a dedicated LPS staff and school board, and an unbelievably generous community. Lexington is truly one of a kind and perhaps one of the best kept secrets in the state."

The mission of Lexington Public Schools is to develop capable and responsible lifelong learners. With the cooperation of family, school and community, we will prepare students for the global challenges and the opportunities of the future.

To learn more visit us at www.lexschools.org



Photo by Brian Nebel



HEALTH CARE

Residents of Lexington and Dawson County have access to numerous, quality health-care facilities and services.

From providing multilingual support to medical specialists, **Plum Creek Medical Group** is committed to improving the way you're cared for. As your independent, physician-owned health care provider, they ensure health care has possibilities by offering the best treatment options available. Some of the services include preventative care, illness, injury, disease management, aesthetics and wellness. They have clinics located in Lexington, Eustis and Johnson Lake to service their patients. Their care team works with you for a lifetime of good health!

Lexington Regional Health Center (LRHC) is a Critical Access Hospital employing approximately 300 passionate, dedicated people. Lexington Regional is a progressive healthcare facility dedicated to providing exceptional, cost-effective care to Lexington and the surrounding areas. More than just a hospital, Lexington Regional is also home to an emergency room, Family Medicine Specialists Clinic, Bertrand Clinic, Elwood Clinic, a state-of-the-art outpatient services and surgery center, Rehabilitation Services, obstetrics services and more. With over 15 visiting specialists regularly seeing patients at the Outpatient Services Center, comprehensive care is avail-

able without having to travel. Specialties include general surgery, cardiology, nephrology, obstetrics & gynecology, podiatry, urology, orthopedics, pain management, wound care, spinal surgery, ear, nose & throat, ophthalmology, pulmonology and more can be seen in the same facility as your primary care provider. Lexington Regional is proud to offer family medicine for families and patients of all ages. The Family Medicine Specialists Clinic is open 7 days a week with extended hours to help accommodate your busy schedule. Lexington Regional Health Center is honored to care for you and your loved ones!

Ridgeway Senior Living gives senior residents the choices they need to create their ideal senior living. Conveniently located in Lexington, we are close to hospitals and physicians. Residents have plenty of entertainment options nearby as well. Lexington has plenty of events for seniors looking for some excitement. They provide independent and assisted living services to make sure seniors get the most out of their retirement years. The community has numerous apartments available in several styles. There are several floor plans to choose from, with options for handicap accessible add-ons and other features. They also provide 24-hour staff that are always available when needed.



**NEBRASKALAND
KANSASLAND
COLORADOLAND**
TIRE GROUP

TIRES OF EVERY SIZE & TYPE
COMPLETE AUTO REPAIR
ON-FARM TIRE SERVICE

FIND A LOCATION
NEAR YOU AT
THE TIRES STORE.COM

511 PLUM CREEK PARKWAY • 308-324-4604
3004 PLUM CREEK PARKWAY • 308-324-6374

AD CONTENTS

BHA Real Estate.....	9
Central Community College.....	24
City of Lexington.....	31
Dan's Sanitation	12
Darling Ingredients	16
Dawson County Agri Society	21
Dawson County History Museum	26
Doran Post.....	16
Eustis Body Shop	17
Family Physical Therapy	22
Farm Bureau Insurance.....	6
Fat Dogs	5
HAR Transportation Building Division.....	11
Heartland Chevrolet.....	8
Heartland Museum of Military Vehicles	25
Home Federal Bank.....	13
Homestead Bank & Insurance.....	5
Kirk's Nebraskaland.....	11
Lakeside Golf Club	14
Lexington Convention & Visitor's Bureau	27, 32
Lexington Housing Authority.....	6
Lexington Regional Health Center.....	2
Loudon's	4
Mac's Creek Winery & Brewery.....	4
Madeline's Cafe & Bakery	14
Majestic Theatre	24
MRK Inc.....	16
Nautical Rose	10
Nebraskaland Tire	19
Overton Veterinary Services, LLC	23
Paulsen, Inc.....	23
Platte Valley Auto.....	8
Plum Creek Dentistry.....	22
Plum Creek Market Place.....	21
Plum Creek Medical Group	20
Primary Electric	16
St. Ann's Catholic Church.....	29
TEC Equipment	15
The Home Agency	9
Titan Machinery	12
Trinity Lutheran Church	29
Trius Federal Credit Union	10
Two Rivers Public Health.....	16
Tyson Foods, Inc.	7
Weathercraft Roofing Co.	15
YMCA	15

WHERE
HEALTH CARE
IS TREATED
Personally

**PHYSICIANS WHO
FOCUS ON PEOPLE.
SERVICES DRIVEN BY
PERSONALIZED CARE.**

From providing multilingual support to medical specialists. **Plum Creek Medical Group** is committed to improving the way you're cared for. As your independent, physician-owned health care provider, we ensure health care has possibilities by offering the best treatment options available.

Monday-Friday • 8:00 a.m.-5:00 p.m.
Saturday • 8:00-11:30 a.m.

Welcome to *Better* Healthcare



**Plum Creek
Medical
Group**

Lexington
308-324-6386

Eustis
308-486-5440

Johnson Lake
308-324-6386

For after-hours medical concerns,
please call 308-746-6065

plumcreekmedicalgroup.com

Find us on Facebook



Dr. John Ford



Dr. Ed Ford



Jennifer Hunke, PA-C



Melissa Hall, PA-C



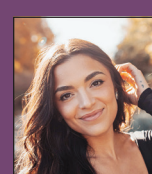
Adam Dannehl, PA-C



Jason J. Dillard, LIMHP



Maria Diaz, PLMHP, PLADC



Chloe Gonzalez, RN

BUSINESS DIRECTORY

A

Arby's
2508 Plum Creek Pkwy
Lexington, NE 68850
(308) 324-4918

Around the Block Catering, LLC
75905 Rd. 431
Lexington, NE 68850
(308) 325-6547

ATC Communications
P.O. Box 300
Arapahoe, NE 68922
(308) 962-7298

B

B & B Veterinary Services
3104 N. Adams
Lexington, NE 68850
(308) 324-3411

Barney Insurance
510 E. 5th St.
Lexington, NE 68850
(308) 324-6224

Batie Cattle Co.
43590 Rd. 761
Lexington, NE 68850
(308) 325-5000

BHA Real Estate LLC
709 E. Pacific
Lexington, NE 68850
(308) 324-5581

Bill Stewart
2701 N. Adams
Lexington, NE 68850
(308) 324-2764

Bill's Volume Sales, Inc.
75470 Rd. 435
Lexington, NE 68850
(308) 324-7409

Black Hills Energy
610 Central Ave
Kearney, NE 68847
(308) 380-8634

Bob's True Value
1601 Plum Creek Pkwy
Lexington, NE 68850
(308) 324-9945

Bomgaars
1701 Plum Creek Pkwy
Lexington, NE 68850
308-324-4231

Burger King
2505 Plum Creek Pkwy
Lexington, NE 68850
(308) 324-3679

Busy Bones Butcher, LLC
75829 Rd. 426
Cozad, NE 69130
(308) 325-9135

C

Calvary Assembly of God
1304 N Adams St.
Lexington, NE 68850
308-324-5310

Car-Bar Cattle Co.
43692 Rd. 758
Lexington, NE 68850
(308) 324-2825

Central Community College
1501 Plum Creek Pkwy
Lexington, NE 68850
(308) 324-8480

Central NE Public Power & Irrigation
415 Lincoln St.
Holdrege, NE 68949-0740
(308) 995-8601

DAWSON COUNTY FAIRGROUNDS



DAWSON COUNTY FAIR & RODEO
JULY 16-20, 2025

NEBRASKA STATE RODEO ASSOCIATION FINALS
SEPTEMBER 5-7, 2025

ADDITIONAL EVENTS & INFORMATION AVAILABLE
ON OUR WEBSITE: DAWSONCOUNTYFAIR.COM

1000 PLUM CREEK PARKWAY, LEXINGTON, NEBRASKA
308-324-3600 • DAWSONFAIRGROUNDS@GMAIL.COM

Plum Creek Market Place

Gift & Flowers

**Good Food,
Great Prices &
Awesome People**

1411 Plum Creek Pkwy

Lexington, NE

308-324-2327

Central Nebraska Human Trafficking & Immigration Outreach
513 N. Grant Ste. D
Lexington, NE 68850
(308) 325-2295

Central Valley Irrigation
1801 Plum Creek Pkwy
Lexington, NE 68850
(308) 324-3434

Chief Ethanol Fuels, Inc.
1111 E. Industry Drive
Lexington, NE 68850
(308) 217-7100

Church of God of Prophecy/
Iglesia de Dios de la Profecia
1011 N. Lincoln
Lexington, NE 68850
(308) 325-9899

City of Lexington
406 E. 7th St.
Lexington, NE 68850
(308) 324-2341

Clay Patton – Marshall Land Brokers & Auctioneers
75399 Rd. 431
Lexington, NE 68850
(719) 760-0747

Coffee Cottage
2703 Plum Creek Pkwy
Lexington, NE 68850
(308) 324-0400

Comfort Inn
2810 Plum Creek Pkwy
Lexington, NE 68850
(308) 324-3747

Community Action Partnership of Mid-NE
931 W. 7th St.
Lexington, NE 68850
(308) 324-4219

Computer Assistance
75137 Hwy 283
Lexington, NE 68850
(308) 324-6094

Contryman Associates, PC
707 E. Pacific Ave.
Lexington, NE 68850
(308) 324-2368

Country Partners Cooperative Agronomy
1306 E. Walnut
Lexington, NE 68850
(308) 324-2000

Country Partners Cooperative Car Care Center
711 E. Pacific Ave.
Lexington, NE 68850
(308) 324-2000

Cricket Wireless
508 N. Lincoln
Lexington, NE 68850
(308) 985-1445

Crossroads Mission Avenue
907 W. 8th St.
Lexington, NE 68850
(308) 378-3502

Cross Creek Apartments
300 Cutler Dr.
Lexington, NE 68850
(308) 746-7037

Culligan
304 E. 5th St.
Cozad, NE 69130
(308) 324-8888

D
Dan's Sanitation, Inc.
43566 Rd. 754
Lexington, NE 68850
(308) 324-6693

Darling Ingredients, Inc.
1208 Walnut St.
Lexington, NE 68850
(308) 324-5563

Darr Feedlot, Inc.
42826 Rd. 759
Cozad, NE 69130
(308) 324-2363

Dave Stenberg
403 Cherokee Rd.
Lexington, NE 68850
(308) 324-2262

Dawson County Children's Museum
701 Plum Creek Pkwy
Lexington, NE 68850
(308) 325-6164

Dawson County Fairgrounds
1000 Plum Creek Pkwy
Lexington, NE 68850
(308) 324-3600

Dawson County Historical Society & Museum
805 N. Taft
Lexington, NE 68850
(308) 324-5340

Dawson Public Power District
75191 Rd. 433
Lexington, NE 68850
(308) 324-2386

Days Inn
2506 Plum Creek Pkwy
Lexington, NE 68850
(308) 324-6440

DC Climate Control
309 Maple St.
Cozad, NE 69130
(308) 325-3986

Denker, Inc.
43317 Rd. 761
Lexington, NE 68850
(308) 324-3051


Designer Craft Woodworking, Inc.
601 E. Commerce Rd.
Lexington, NE 68850
(308) 324-5825

Dian Kraus
75394 Rd. 427
Lexington, NE 68850


Dirt Crown/Dawson County Raceway
1000 S. Plum Creek Pkwy
Lexington, NE 68850

Dollar Fresh
1001 Plum Creek Pkwy
Lexington, NE 68850
(308) 324-9972


Doran Post & Associates, Inc.
935 W. 7th St.
Lexington, NE 68850
(308) 324-6992



**PLUM CREEK
Dentistry**



**Bruce L. Hanson DDS
Casey L. Sexton DDS**



302 E. 6th St., Suite #3 • P.O. Box 626
Lexington, NE 68850
(308) 324-5551
www.plumcreekdentistry.com



Excellence in Rehabilitation

- Physical, Occupational & Speech Therapy Services
- Sports Rehab / Orthopedic Rehab
- Pediatrics
- Pre & Post Surgery
- Industrial/Worksite Consultation
- Women's Health
- Neurological Rehab
- Balance & Mobility

110 W 5th St., Lexington • 324-3700
74902 Johnson Lake Dr. 26, Johnson Lake • 785-4081
Walk-ins Welcome

Downey Drilling, Inc.
75471 Rd. 435
Lexington, NE 68850
(308) 324-2303

El Sazon Taquizas
601 Plum Creek Pkwy
Lexington, NE 68850
(308) 325-0499

Farm Bureau Financial Ser-
vices - Sarah Becker
721 E. Pacific St.
Lexington, NE 68850
(308) 324-6355

First United Methodist Church
201 E. 8th St.
Lexington, NE 68850
(308) 324-2397

E

Eagle Run Apartments/The
Philmoore Company
809 N. Erie
Lexington, NE 68850
(308) 324-6046

Eakes Office Solutions
2401 Ave. A
Kearney, NE 68845
(308) 234-2538

Edgewater Insurance & Real
Estate
525 N. Washington St.
Lexington, NE 68850
(308) 324-4641

Edward Jones Investments/
Dan Clark
709 N. Washington St.
Lexington, NE 68850
(308) 324-7424

Edward Jones/Garth Mins &
Keenan Kremke
505 N. Jackson
Lexington, NE 68850
(308) 324-9043

Eilers Machine & Welding,
Inc.
600 E. Commerce Rd.
Lexington, NE 68850
(308) 324-3751

El Rancho Viejo
2307 Plum Creek Parkway
Lexington, NE 68850
(308) 324-7265

Elwood Chamber of Com-
merce
PO Box 92
Elwood, NE 68937
(308) 785-2480

Equus Workforce Services
1308 N. Adams
P O Box 801
Lexington, NE 68850
(308) 324-9907

Eustis Body Shop
609 N. Adams
Lexington, NE 68850
(308) 324-6812

Express Laundry
210 Frontier St., Ste. 6
601 W. Pacific
Lexington, NE 68850
(308) 325-0677

F

Family Physical Therapy &
Sports Center
110 W. 5th St.
Lexington, NE 68850
(308) 324-3700

Farm Bureau Financial Ser-
vices - Chase Wolf
411 E. Pacific St.
Lexington, NE 68850
(308) 324-6355

Fat Dogs
2607 Plum Creek Pkwy
Lexington, NE 68850
(308) 532-9126

Fellers Heating & Air
P.O. Box #43
Cozad, NE 69130
(308) 746-8563

Fill-n-Chill
123 E. Pacific
Lexington, NE 68850
(308) 324-5860

First Interstate Bank
110 W. 7th St.
Lexington, NE 68850
(308) 324-5691

First Presbyterian Church
801 N. Lincoln
Lexington, NE 68850
(308) 324-5507

Five Star Flooring
111 E. 5th St.
Lexington, NE 68850
(308) 324-3052

FRAE, Inc.
608 W. Vine
Lexington, NE 68850
(308) 324-4018

G

Go Home Realty
211 E. 6th St.
Lexington, NE 68850
(308) 651-0938

Goodwill Industries of Greater
Nebraska Employment &
Career Services
2401 Plum Creek Pkwy
Lexington, NE 68850
(308) 324-7366



PAULSEN
INC.
P.O. BOX 17 | COZAD, NE 69130
308-784-3333

Arapahoe	Gothenburg	North Platte
Broken Bow	Holdrege	McCook
Elm Creek	Indianola	Ogallala
Franklin	Lexington	

General Contractor - Concrete Drives
Feed Bunks - Septic Tanks - Sand & Gravel
Ready Mix - Bunker Blocks
Picnic Tables



**OVERTON
VETERINARY
SERVICES, LLC**

Complete Veterinary and
Nutritional Services for your large
and small animals

John R. Lawton, DVM
Jared P. Walahoski, DVM
Eliot D. Linsenmeyer, DVM
Jessica A. Robb, DVM
Hannah-Wolfe Johns, DVM
Paige Schmidt, DVM

75348 Road 440 • Lexington, NE 68850
(308) 324-7202 • www.overtonvet.com

Great Plains Communications
7310 2nd Ave.
Kearney, NE 68847
(888) 343-8014

Groves By Riverside
3016 Plum Creek Pkwy
Lexington, NE 68850
(605) 310-6209

GROW Nebraska Foundation
421 W. Talmadge St.
Kearney, NE 68845
(308) 338-3520

H
Hamilton Business Technologies
1006 12th St.
Aurora, NE 68818
(308) 381-1000

Hank's Gas & Grocery
1303 Plum Creek Pkwy
Lexington, NE 68850
(308) 378-3474

HAR Transportation
704 E. Prospect Rd.
Lexington, NE 68850
(308) 324-7375

Healing Hearts and Families
513 N. Grant St. Ste. D
Lexington, NE 68850
(308) 870-2630

Heartland Chevrolet
1111 Plum Creek Pkwy
Lexington, NE 68850
(308) 324-2306

Heartland Museum of Military Vehicles
606 Heartland Rd.
Lexington, NE 68850
(308) 324-6329

Heavy Crown
605 N. Taft
Lexington, NE 68850
(308) 660-7371

Heldt, McKeone & Copley
710 N. Grant
Lexington, NE 68850
(308) 324-5151

Holdrege Irrigation, Inc.
43248 US 283
Lexington, NE 68850
(308) 324-2121

Holiday Inn Express
2605 Plum Creek Pkwy
Lexington, NE 68850
(308) 324-9900

Home Federal Bank
201 W. 7th St.
Lexington, NE 68850
(308) 324-2331

Home Instead Senior Care
1007 N. Jeffers
North Platte, NE 69101
(308) 532-3960

HOMES of Central Nebraska, Inc.
1304 N. Adams
Lexington, NE 68850
(308) 325-7610

Homestead Bank
202 E. 7th St.
Lexington, NE 68850
(308) 324-6358

I
Immigrant Legal Center
2401 Plum Creek Pkwy,
Ste. 2
Lexington, NE 68850
(402) 898-1349

J
Jerrold Remmenga, DDS, PC
903 N. Grant
Lexington, NE 68850
(308) 324-6165

JK Energy Consulting
74408 Rd. 433
Smithfield, NE 68976
(402) 440-0227

JMS Millwright & Repair
43351 Rd. 760
Lexington, NE 68850
(308) 324-2499

Johnson Lake Area Chamber of Commerce
PO Box 244
Lexington, NE 68850
(308) 325-1409

Johnson Lake Flying Service
1501 N. Airport Rd.
Lexington, NE 68850
(308) 785-2100

Jones Plumbing & Heating, Inc.
811 W. 7th St.
Lexington, NE 68850
(308) 324-3333

K
KBBN-95.3FM & KCNI 1280-AM
79895 Hwy 2
Broken Bow, NE 68822
(308) 872-5881

Keep Lexington Beautiful
801 W. Vine
Lexington, NE 68850
(308) 325-6707

Kirk's Nebraskaland Restaurant
3002 Plum Creek Pkwy
Lexington, NE 68850
(308) 324-6641

KRVN AM & FM
1007 Plum Creek Pkwy
Lexington, NE 68850
(308) 324-2371

L
L2 for Kids, Inc.
76311 Rd. 416
Willow Island, NE 69171
(308) 530-0441

Lakeside Golf Club
74839 Hwy 283
Elwood, NE 68937
(308) 785-2818

Landmark Implement
75482 Rd. 435
Lexington, NE 68850
(308) 324-4639

Larry Reynolds
74898 Rd. 435
Lexington, NE 68850
(308) 325-3450



Central COMMUNITY COLLEGE
Visit us | www.cccneb.edu

Lexington Center
1501 Plum Creek Pkwy.
Lexington, NE 68850
308-324-8480

Take Control of Your Career
Apply Now



The **Majestic Theatre**

Movie Showtimes
Wednesday, Friday & Saturday • 7:30 p.m.
Sunday • 3:00 p.m.

615 N. Washington St. • Lexington, NE
308-746-7348 • www.lexmajestic.org

Learning Adventures - Lexington
201 E. 8th St.
Lexington, NE 68850
(308) 746-7009

Lexington Clipper-Herald
114 W. 5th St.
Lexington, NE 68850
(308) 324-5511

Lexington Grand Generation
Center
407 E. 6th St.
Lexington, NE 68850
(308) 324-2498

Lexington Regional Health
Center
1201 N. Erie
Lexington, NE 68850
(308) 324-5651

Levander's Body Shop
2809 Heartland Rd.
Lexington, NE 68850
(308) 217-0695

Lexington Community Founda-
tion
607 N. Washington St.
Lexington, NE 68850
(308) 324-6704

Lexington Housing Authority
609 E. 3rd St.
Lexington, NE 68850
(308) 324-4633

Lexington Rotary Club
P.O. Box 781
Lexington, NE 68850

Lexington Airport Authority
1501 N. Airport Rd.
Lexington, NE 68850
(308) 324-8770

Lexington Family Dentistry
1220 N. Adams
Lexington, NE 68850
(308) 324-7422

Lexington Livestock Market
300 Plum Creek Pkwy
Lexington, NE 68850
(308) 324-4663

Lexington Self Storage
606 Commerce Rd
Lexington, NE 68850
(308) 221-2299

Lexington Area Chamber of
Commerce/Visitor's Bureau
1501 Plum Creek Pkwy, Ste.
2A
Lexington, NE 68850
(308) 324-5504

Lexington Family Eyecare
801 N. Grant
Lexington, NE 68850
(308) 324-5631

Lexington Public Library
907 N. Washington St.
Lexington, NE 68850
(308) 324-2151

Lutheran Family Services
200 W. 7th St.
Lexington, NE 68850
(308) 324-2312

Lexington Area United Way
118 E. 6th St., Ste. 4A
Lexington, NE 68850
(308) 324-5774

Lexington Feeders Service
200 S. Washington St.
Lexington, NE 68850
(308) 324-3311

Lexington Public Schools
300 S. Washington St.
Lexington, NE 68850
(308) 324-4681

M
Mac's Creek Winery & Brew-
ery
43315 Rd. 757
Lexington, NE 68850
(308) 324-0440



**HEARTLAND MUSEUM
OF
MILITARY VEHICLES**

Open DAILY except for all major U.S. holidays
Mon - Sat • 10 a.m. - 5 p.m. | Sunday • 1-5 p.m.

Just off Interstate 80 at exit 237 Lexington, NE
308.324.6329 • 606 Heartland Road • Lexington

HEARTLAND MUSEUM OF MILITARY VEHICLES
Dedicated To Those That Served
LEXINGTON, NEBRASKA

Mac's Short Stop
1114 N. Adams
Lexington, NE 68850
(308) 324-1703

Madeline's Cafe & Bakery
501 N. Washington St.
Lexington, NE 68850
(308) 324-9010

Majestic Theatre
615 N. Washington St.
Lexington, NE 68850
(308) 746-7348

Make-A-Wish Nebraska
412 E. 25th St., Ste. D
Kearney, NE 68847
(308) 234-6612

Mary Kay - Elissa Martin
75845 Rd. 438
Lexington, NE 68850
(402) 205-2323

McChesney, Martin and
Sagehorn, P.C.
115 W. 6th St.
Lexington, NE 68850
(308) 324-5575

McDonald's of Lexington, LLC
2706 Plum Creek Pkwy
Lexington, NE 68850
(308) 324-2922

Mead Lumber Co., Inc.
700 S. Plum Creek Pkwy
Lexington, NE 68850
(308) 324-5636

Mike Mandelko, D.D.S.
101 W. 8th St., Ste. B
Lexington, NE 68850
(308) 324-5661

Mike's Sprinkler Service
75823 Rd. 436
Lexington, NE 68850
(308) 325-1813

MRK, Inc.
606 E. Prospect Rd.
Lexington, NE 68850
(308) 324-5790

MyStique Travel
5609 1st Ave. Bldg. A3
Kearney, NE 68847

N
NAPA Auto Parts (S & W)
113 E. 5th St.
Lexington, NE 68850
(308) 324-2313

Nautical Rose
2 Lakeview Acres, Dr. #14
Johnson Lake, NE 68937
(308) 785-4031

Nebraska Department of
Labor
1501 Plum Creek Pkwy, Ste.
3
Lexington, NE 68850
(308) 324-2064

Nebraska Public Power
District
P.O. Box 2170
Kearney, NE 68847
(877) 275-6773

Nebraskaland Tire
3004 Plum Creek Pkwy
511 Plum Creek Pkwy
Lexington, NE 68850
(308) 324-6374

Nelson's Furniture & Floor
Covering
508 N. Washington St.
Lexington, NE 68850
(308) 324-6406

O
O'Hanlon Seed, Inc. & Sham-
rock Ag. Consult
921 W. 7th St.
Lexington, NE 68850
(308) 324-4567

Optimist of Lexington
P.O. Box 355
Lexington, NE 68850
(308) 324-5294

OPTK Networks
3900 NW 12th St., Ste. 100
Lincoln, NE 68521
(402) 875-6325

Orthman by Unverferth
75765 Rd. 435
Lexington, NE 68850
(308) 324-4654



DAWSON COUNTY HISTORY MUSEUM

805 N. Taft Street · Lexington · 308-324-5340
Tues-Sat 10:00-4:00 · www.dchsmuseum.com



Overton Veterinary Services
75348 Rd. 440
Lexington, NE 68850
(308) 324-7202

Paw Prints in Dawson Co
2012 Meridian Ave.
Cozad, NE 69130
(308) 325-9680

Prairie Heights Apartments
605 W. Cedar St.
Lexington, NE 68850
(308) 380-2591

Runza Lexington
2510 Plum Creek Pkwy
Lexington, NE 68850
(308) 746-7234

P
Pam Trampe
709 E. Pacific
Lexington, Nebraska 68850
(308) 325-5264

Pinnacle Bank
410 N. Washington St.
Lexington, NE 68850
(308) 324-5686

Pro-Printing & Graphics
119 W. 5th St.
North Platte, NE 69101
(308) 532-1111

S
Sam's Club
1510 N. Diers Ave.
Grand Island, NE 68801
(308) 384-0622

Parkview Baptist Church
803 W. 18th St.
Lexington, NE 68850
(308) 324-4410

Platte Valley Auto
400 N. Jefferson
Lexington, NE 68850
(308) 324-5619

R
Reynolds-Love Funeral Home
106 W. 8th St.
Lexington, NE 68850
(308) 324-2221

Service Master of Mid-Ne-
braska
302 E. Frontier St.
Lexington, NE 68850
(308) 324-3072

Pathway Bank L.P.O.
505 N. Jackson
Lexington, NE 68850
(308) 217-4914

Plum Creek Dentistry
302 E. 6th St., Ste. 3
Lexington, NE 68850
(308) 324-5551

Ridgeway Senior Living
1811 Ridgeway
Lexington, NE 68850
(308) 378-3800

Sheltering Hands
(formerly Parent-Child Cen-
ter)
1001 N. Washington St.
Lexington, NE 68850
(308) 324-2336

Paulsen, Inc.
43434 Heartland Rd.
Lexington, NE 68850
(308) 324-3953

Plum Creek Market Place
1411 Plum Creek Pkwy
Lexington, NE 68850
(308) 324-2327

Roberts Cattle Company
75590 Rd. 436
Lexington, NE 68850
(308) 324-5611

Shotkoski Hay Co.
1809 Plum Creek Pkwy
Lexington, NE 68850
(308) 324-4193



LEXINGTON

a better life

Lexington Convention & Visitor's Bureau

308.324.5504 • lexcoc.com

1501 Plum Creek Parkway, Suite 2A • Lexington

Paid for by the Lexington CVB.



Sign Pro/Bennett Advertising
Specialties
112 W. 6th St.
Lexington, NE 68850
(308) 324-8000

St. Ann's Catholic Church
301 E. 6th St.
Lexington, NE 68850
(308) 324-4647

Strike & Spare Bowl & Sports
Bar
1408 N. Adams
Lexington, NE 68850
(308) 324-4675

Subway/Goodrich
507 W. Pacific
Lexington, NE 68850
(308) 324-5761

Super 8 Motel
104 E. River Rd.
Lexington, NE 68850
(308) 324-7434

T
T.L. Sund Constructors, Inc.
707 N. Ontario
Lexington, NE 68850
(308) 324-5186

T.O. Haas Tire
1001 W. Pacific
Lexington, NE 68850
(308) 324-3900

TEC Equipment
602 E. Frontier St.
Lexington, NE 68850
(308) 324-7759

The H.O. Smith Company
A Nebraska Company Agency
104 E 7th St.
Lexington, NE 68850
(308) 324-2216

Three 21 Tavern
112 E. 5th St.
Lexington, NE 68850
(308) 746-7181

Titan Machinery, Inc.
75481 Rd. 435
Lexington, NE 68850
(308) 324-5553

Toro Tom's Sports Bar & Grill
405 E. Pacific St.
Lexington, NE 68850
(308) 746-7122

Trinity Lutheran Church
205 E. 7th St.
Lexington, NE 68850
(308) 324-4341

Trius Federal Credit Union
115 Cattleman's Dr.
Lexington, NE 68850
(308) 324-1966

Two Rivers Public Health
Department
516 W. 11th St. Ste. 108B
Kearney, NE 68845
(308) 233-3100

Tyson Foods, Inc.
1500 Plum Creek Pkwy
Lexington, NE 68850
(308) 324-8205

U

Union Pacific Railroad
1400 Douglas St.
Stop 1560
Omaha, NE 68105
(303) 405-5010

United by Culture Media
14301 FNB Pkwy, Ste. 100
Omaha, NE 68114
(402)318-3689

United Country – Ag Team
Land Brokers
2802 Plum Creek Pkwy,
Ste. E
Lexington, NE 68850
1-800-785-2528

V

Viaero Wireless
210 Frontier St., Ste. 5
Lexington, NE 68850
(308) 651-1111

Viewpoint Farm, Inc.
43676 Rd. 756
Lexington, NE 68850
(308) 324-4425

Viterra USA Grain
302 E. Pacific St.
Lexington, NE 68850
(308) 217-7000

VVS, Inc.-Canteen
310 W. Hwy 30
Cozad, NE 69130
(308) 784-2164

W

Wal-Mart Stores, Inc.
200 Frontier St.
Lexington, NE 68850
(308) 324-7427

Walking J
43646 Rd. 749
Lexington, NE 68850

Weathercraft Roofing Co.
906 W. 8th St.
Lexington, NE 68850
(308) 534-3480

Wireless World-Verizon
2802 Plum Creek Pkwy,
Ste. A
Lexington, NE 68850
(308) 324-2300

Y

YMCA-Orthman Community
YMCA
1207 N. Grant
Lexington, NE 68850
(308) 324-1970

LEXINGTON CHURCHES

Berean Bible Church
210 W. 7th Street
(308) 324-3095

Buffalo Grove Presbyterian
76199 Rd. 429
(308) 324-4211

Calvary Assembly of God
1304 N. Adams
(308) 324-5310

Camino de Vida
810 S. Washington Street
(308) 746-2431

Church of Christ
1211 N. Tyler Street
(308) 324-3191

Church of Christ North Side
704 E. 6th Street
(308) 324-4182

Church of God of Prophecy/
Iglesia de Dios de la Profecia
1011 N. Lincoln
Lexington, NE 68850
(308) 325-9899

Church of Jesus Christ of
Latter-day Saints
1407 W. 13th Street
(308) 324-6840

Evangelical Free Church
810 S. Washington Street
(308) 324-3825

First Baptist Church
713 Monroe Street
(308) 324-2909

First Lutheran Church
42957 Buffalo Road
(308) 324-8715

First Presbyterian Church
801 N. Lincoln Street
(308) 324-5507

First United Methodist Church
201 E. 8th Street
(308) 324-2397

Grace Lutheran ELCA
105 E. 17th
(308) 324-2496



Iglesia Asambleas de Dios
Filadelphia
501 S. Madison Street
(308) 325-9909

Iglesia de Dios Camino de
Santidad
500 N. Monroe Street
(308) 324-8764

Iglesia Dios Es Amor
521 N. Madison
(308) 324-7960

Lexington Christian Church
1206 N. Erie Street
(308) 324-3084

Masjidul Rahma of Lexington
114 W. Fifth Street

Parkview Baptist
803 W. 18th Street
(308) 324-4410

Salon Del Reino De Los
Teshgos De Jehova
705 20th Street

St. Ann's Catholic Church
301 E. 6th Street
(308) 324-4647

St. John's Lutheran Church
42650 Road 764, Cozad, NE
(308) 784-3063

St. Peter's in the Valley
Episcopal
905 E. 13th Street
(308) 324-6199

Trinity Lutheran Church
LCMS
205 E. 7th St.
(308) 324-4341

Trinity Lutheran Church

WORSHIP
Saturday 6:00 p.m. & Sunday 10:00 a.m.

SUNDAY SCHOOL & BIBLE CLASS
Sunday 8:45 a.m.

Pastor Rob Kuefner

205 E. 7th St. • Lexington, NE 68850
(308) 324-4341 • www.tlcllex.org

SAINT ANN'S CATHOLIC CHURCH

ENGLISH SCHEDULE
Saturday: 5:00 p.m.
Sunday: 9:00 a.m.

SPANISH SCHEDULE
Sunday: 11:30 a.m.
Sunday: 1:30 p.m.

301 E. 6th St. • Lexington, NE • 308-324-4647 • www.lexstanns.com

SHOP LOCALLY

**Lexington Chamber
Bucks are accepted
by these participating
businesses.**

- Arby's
- Around the Block Catering, LLC
- ATC Communications
- B and B Veterinary Services
- Barney Insurance
- Bill's Volume Sales, Inc.
- Black Hills Energy
- Bob's True Value
- Bomgaars
- Burger King
- Busy Bones Butcher, LLC
- City of Lexington
- Coffee Cottage
- Comfort Inn
- Computer Assistance
- Contryman Associates, PC
- Country Partners Cooperative
- Cricket Wireless
- Crossroads Mission Avenue
- Culligan
- Dan's Sanitation, Inc.
- Dawson County Children's Museum
- Dawson County History Museum
- Dawson Public Power District
- Days Inn
- DC Climate Control
- Doran Post & Associates, Inc.
- Dollar Fresh
- Downey Drilling, Inc.
- Eakes Office Solutions
- Edgewater Insurance & Farm Management
- Edward Jones Investments/Dan Clark
- Edward Jones/Garth Mins
- Eilers Machine & Welding, Inc.
- El Sazon Taquizas
- El Rancho Viejo
- Eustis Body Shop
- Express Laundry
- FRAE, Inc.
- Family Physical Therapy & Sports Center
- Farm Bureau Financial Services - Chase Wolf
- Farm Bureau Financial Services – Sarah Becker
- Fat Dogs
- Fill-n-Chill
- Five Star Flooring
- Goodwill Industries of Greater Nebraska Employment and Career Services
- Great Plains Communication
- Hank's Gas & Grocery
- Healing Hearts and Families



- Heartland Chevrolet
- Heartland Museum of Military Vehicles
- Heavy Crown Tattoo
- Holiday Inn Express
- Jerry Remmenga, D.D.S., PC
- JMS Millwright & Repair
- Jones Plumbing & Heating, Inc.
- Kirk's Nebraskaland Restaurant
- Lakeside Golf Club
- Landmark Implement
- Learning Adventures – Lexington
- Levander's Body Shop
- Lexington Family Dentistry
- Lexington Family Eyecare
- Lexington Feeders Service
- Lexington Grand Generation Center
- Lexington Livestock Market
- Lexington Public Library
- Lexington Regional Health Center
- Lutheran Family Services
- Mac's Creek Winery & Brewery
- Mac's Short Stop
- Madeline's Cafe & Bakery
- Majestic Theatre
- Mary Kay - Elissa Martin
- McChesney, Martin and Sagehorn, P.C.
- McDonald's of Lexington, LLC
- Mead Lumber Co., Inc.
- Mike Mandelko, D.D.S.
- Mike's Sprinkler Service
- NAPA Auto Parts (S & W)
- Nautical Rose
- Nebraska Public Power District
- Nebraskaland Tire
- Nelson's Furniture & Floor Covering
- O'Hanlon Seed, Inc. & Shamrock Ag. Consult.
- OPTK Networks
- Overton Veterinary Services
- Paulsen, Inc.
- Platte Valley Auto
- Plum Creek Dentistry
- Plum Creek Market Place
- Plum Creek Medical Group
- Pro Printing & Graphics
- Reynolds-Love Funeral Home
- Runza – Lexington
- Service Master of Mid-Nebraska
- Sign Pro/Bennett Advertising Specialties
- Strike & Spare Bowl Sports Bar, LLC
- Subway/Goodrich
- Super 8 Motel – Lexington
- TEC of Lexington
- T.L. Sund Constructors, Inc.
- T.O. Haas Tire
- Toro Tom's Sports Bar & Grill
- Three 21 Tavern
- Titan Machinery, Inc.
- Trius Federal Credit Union
- Viaero Wireless
- VVS, Inc. - Canteen
- Weathercraft Roofing Co.
- Wireless World - Verizon
- YMCA - Orthman Community YMCA



Veterans Memorial Pavilion
Kirkpatrick Memorial Park



Lexington City Parks



Optimist Rec Complex & Indoor Hitting Facility
1601 W. 13th



Lexington Grand Generation Center
407 E. 6th



Lexington Family Aquatic Center
11th & Monroe
Open Memorial Weekend through August



Lexington Racquet Facility



Lexington Fieldhouse
Recreation Center
1502 N. Airport Rd.



Parks & Recreation Department

P.O. Box 70 • Lexington, NE 68850 • 308.324.2498 • www.cityoflex.com



This is our Community.

Lexington
NEBRASKA

Photo: Arturo Banderas

Antiques • Lodging • Unique Dining
Museums • Winery • Brewery • Camping
Recreation • Events • Celebrations

LEXINGTON

a better life

Lexington Convention & Visitor's Bureau
308-324-5504 • lexcoc.com

Paid for by Lexington CVB