



Lexington VISITOR'S GUIDE 2024

LEXINGTON

a better life

EXPERIENCE COMPASSIONATE CARE IN YOUR COMMUNITY.

We're not just a hospital. We're
your friends, family, and neighbors,
dedicated to your well-being.

Your Community. Your Health. Your Care.



1201 N. Erie, Lexington, NE 68850
(308) 324-5651 • lexingtonregional.org

   @lexrhc  @lexingtonregional



CONTENTS

Welcome.....	4
City Services.....	5
Historic Transportation.....	7
History	10
Business & Industry.....	12
Fun & Entertainment.....	13
Attractions.....	14
Government.....	17
Quality Education	18
Health Care	19
Ad Contents.....	20
Business Directory.....	21

Official publication of the Lexington Convention and Visitor's Bureau in cooperation with the Lexington Area Chamber of Commerce.



PLUM CREEK LEXINGTON
1874 2024
150TH ANNIVERSARY

CELEBRATING 150 YEARS
Looking back, moving forward. This is our community.

What are the benefits of joining the Chamber?



The Chamber serves as a focal point for community-wide information, particularly as it applies to business and commerce. When callers or visitors ask us for recommendations, we refer Chamber partners first, initiating opportunities to reach new customers.



Networking can supercharge your connections to the marketplace. The Chamber arranges events where members – including employees – have opportunities to connect business-to-business as well as customer-to-business.



The Chamber's strength is certainly in its partners. By building relationships with local business men and women, the Chamber becomes a united voice for the community.



Partners can enhance their online presence by linking with the Chamber's 2,000+ Facebook friends, in addition to our connections on other social media sites. We will share events and good news from our partners, reaching up to 3,000 more followers.



On the Chamber's website is one more way customers find you. Our partner businesses are listed alphabetically and also by category, all searchable and user-friendly. Member businesses may select up to five categories that help customers quickly find what they are searching for.



We also list our partner businesses in the annual Lexington Area Visitors Guide, getting business names in front of approximately 2,000 tourists and newcomers each year.



Business partners can add events to the Chamber's online Community Calendar for free. We'll even help you do it.



New Chamber partners get instant publicity with the option of a ribbon-cutting and promotion through email and on social media.



The Chamber offices - also Lexington's Visitor Center - houses a business card display to share our partner's contact with visitors and newcomers. Partners can also display brochures in the office.



Sponsoring events puts your business in the spotlight while showing support for the Chamber, the community and customers. Yes, sponsorship will get you noticed in the best way.



Chamber Bucks - We know that when folks shop local, they support the Lexington economy. Chamber partners can help promote the "shop local" concept by giving and redeeming Chamber Bucks.

PROMOTE – INFORM – CONNECT – ADVOCATE – EDUCATE – PARTNERSHIP

WELCOME

Welcome to Lexington

The mission of Lexington Area Chamber of Commerce is to create and maintain a favorable business climate in the Lexington area by representing the collective interest of business and by becoming involved in other aspects of the community that affect our quality-of-life.

WHERE BUSINESS AND COMMUNITY CONNECT

LEXINGTON

a better life



Photo by Brian Neben



Trius
Federal Credit Union

TRI-US YOU'LL LIKE US!

Let us show you the credit union difference at Trius. Locally owned and operated for over 55 years. Trius is here to help you with all of your savings, checking and loan needs. Proudly serving Lexington, Kearney and the surrounding area.

308-234-9311 www.triusfcu.com

Federally insured by the NCUA.

 EQUAL HOUSING LENDER



Byrns FloorCovering Inc.

"Quality service with hometown pride!"

Mike Byrns

Owner

byrnsfloorcovering@gmail.com

313 Smith Avenue

Elwood, NE-68937

<https://byrnsfloorcovering.com/>

Office: 308-785-2402

Cell: 308-325-2601



CITY SERVICES

Lexington is governed by a five-member elected City Council. Regular meetings of the City Council are on the second and fourth Tuesdays at 5:30 p.m. The City employs a professional manager who oversees day-to-day operations. Lexington Utilities System provides or administers electric, water, sewer and trash removal.

Lexington Public Library
907 N Washington Street,
308-324-2151

Lexington's 18,528 square feet Public Library opened in late 2005, replacing the previous 40-year-old 4,950 square feet facility.

Besides being a beauti-

ful public structure, the new Lexington Public Library offers three technology centers which are capable of housing 36 public use computers. There are also four public meeting rooms, private study rooms, youth activity centers and children's risers for story time and other performing arts. The Library regularly brings in authors, musicians and storytellers to enhance lifelong learning opportunities for local residents.

Grand Generation Center
407 E 6th Street, 308-324-2498

Lexington's 12,500 square feet senior center is regularly open Monday through

Friday from 7:30 a.m. to 5:00 p.m. 3,500 square feet was added in 2007, at which time upgrades and improvements were added to the existing structure. Center staff serve reasonably-priced public meals at noon Monday through Friday. They offer games, crafts, exercise opportunities, occasional evening meals, entertainment, dances and bingo. The

GGC also provides meals-on-wheels to shut-ins, with assistance from many valued volunteers.

Parks & Recreation

Lexington boasts eight public parks with more than 100 acres of outdoor recreation space. Two of the largest parks are graced with recently renovated lakes that feature handicap accessible fishing piers and lots of new



Chase Wolf
 411 E Pacific, Lexington, NE
 308.324.4000
chasewolf.fbfsagents.com

Smarter Insurance for Agriculture®

FARM BUREAU FINANCIAL SERVICES

Farm & Ranch | Commercial Ag | Crop | Workers' Comp | Succession Planning

Securities & services offered through FBL Marketing Services, LLC, 5400 University Ave., West Des Moines, IA 50266, 877/860-2904, Member SIPC. Farm Bureau Property & Casualty Insurance Company, ** Western Agricultural Insurance Company, ** Farm Bureau Life Insurance Company **/West Des Moines, IA. *Affiliates. *Company providers of Farm Bureau Financial Services. PR-SM-A (5-20)

**NEBRASKA LAND
 KANSAS LAND
 COLORADO LAND**
TIRE GROUP

TIRES OF EVERY SIZE & TYPE
 COMPLETE AUTO REPAIR
 ON-FARM TIRE SERVICE

FIND A LOCATION
 NEAR YOU AT
 THE TIRE STORE.COM



**511 PLUM CREEK PARKWAY • 308-324-4604
 3004 PLUM CREEK PARKWAY • 308-324-6374**



trails. Both lakes are stocked with fish from the Nebraska Game & Parks Commission. There are twelve tennis courts, several ball fields, soccer fields, basketball and volleyball courts, Frisbee golf, a skate park, walking trails, and numerous picnic shelters and playground features.

The Lexington Family Aquatic Center features a lap pool, and zero-depth pool with a water slide, as well as a splash pad.

More recent improvements include an indoor hitting facility for baseball and golf practice; and the Lexington Fieldhouse, a 27,000 square feet indoor sports activities building.

Downtown Revitalization

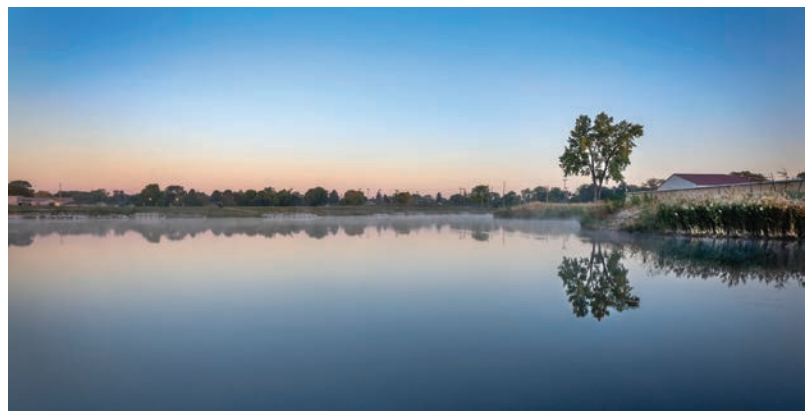
In 2010, Lexington initiated a Downtown Revitalization Project. Spurred by a \$350,000 Community Development Block Grant (CDBG), both public and private improvements were made. Adding local contributions, more than \$600,000

was invested in Lexington's downtown. Subsequently the City secured CDGB funding to make additional improvements in and around the downtown, including street and sewer upgrades, and renovation of the downtown Majestic Theatre.

Dawson County Opportunity Center

1501 Plum Creek Parkway

In 2010, the City of Lexington took the lead in developing the Dawson County Opportunity Center. Once a vacated "big-box store," it's now a buzzing hive of activity. DCOC is home to the Lexington campus of Central Community College, the Lexington Area Chamber of Commerce, City of Lexington Workforce Development, a branch of the Nebraska Department of Labor, Lexington Public Schools Early Learning Academy, Dawson County Family Partners, and a regional call center for Nebraska Department of Health & Human Services.



FAT DOGS

- REWARDS PROGRAM
- SAFE & SECURE PUMPS
- GREAT FUEL PRICES
- HOT FOOD & COLD DRINKS

YOU ARE NOWHERE

SCAN THE CODE
& VISIT OUR SITE!

PLUM CREEK Dentistry

Bruce L. Hanson DDS
Casey L. Sexton DDS

302 E. 6th St., Suite #3 • P.O. Box 626
Lexington, NE 68850
(308) 324-5551
www.plumcreekdentistry.com

HISTORIC TRANSPORTATION

Lexington is at the crossroads of several highways. Highway 30 and Interstate 80 are the main east-west by-ways across Nebraska, while Highways 283 and 21 connect locations from South Dakota to Kansas. Travelers in the past also made their way through Dawson County using one or more of five trails.

Oregon Trail

Possibly the most well-known trail made its way through Dawson County, the Oregon Trail. The route was

the most widely used of all the trails, with more than half a million people using the route for over 25 years. Many of the area's early communities can trace roots to the trail.

Pony Express Route

A symbol of growth westward during the 1800s, the Pony Express was the first link to early settlers. The service was short-lived, operating

from 1860-1861, delivering between St. Joseph, MO and Sacramento, CA until the advent of the telegraph.

Mormon Trail

Nearly 100,000 early adventurers crossed near the future site of Lexington by following the Mormon Trail. The trail loosely followed the

north bank of the Platte River, which later proved to be a viable footprint for the Lincoln Highway and Interstate 80.

Lincoln Highway

The nation's first transcontinental auto route ran along the Platte River. U.S. Highway 30, recognized as the Lincoln Highway, still serves as an east-west route across Nebraska.

Union Pacific Railroad

The Iron Road was the name given to the first transcontinental railroad. In 1865, Union Pacific began laying rails along the Great Platte River Road, and promoted settlement by selling land in the fertile Platte River Valley.



PLATTE VALLEY AUTO

LEXINGTON • KEARNEY

4th & Jefferson • 4210 N. 2nd Ave.

Lexington, NE • Kearney, NE

308-324-5619 • 308-237-2171

www.plattevalleyauto.com • Find us on Facebook 



Where everybody gets a great deal ...
... and a great deal more!

- Factory Certified Sales & Leasing
- Factory Certified Parts Department
- Factory Certified Service Department



1111 Plum Creek Parkway - Lexington, NE

(308) 324-2306 • 1 (888) 324-2306

www.heartlandchevy1.com



WHERE HEALTH CARE IS TREATED *Personally*

PHYSICIANS WHO FOCUS ON PEOPLE. SERVICES DRIVEN BY PERSONALIZED CARE.

From providing multilingual support to medical specialists. **Plum Creek Medical Group** is committed to improving the way you're cared for. As your independent, physician-owned health care provider, we ensure health care has possibilities by offering the best treatment options available.

Monday-Friday • 8:00 a.m.-5:00 p.m.
Saturday • 8:00-11:30 a.m.

Welcome to **Better** Healthcare



**Plum Creek
Medical
Group**

Lexington
308-324-6386

Eustis
308-486-5440

Johnson Lake
308-324-6386

For after-hours medical concerns,
please call 308-746-6065

plumcreekmedicalgroup.com

 Find us on Facebook



Dr. John Ford



Dr. Gregory Kloch



Dr. Ed Ford



Dr. Brett Copley, DO



Jennifer Hunke, PA-C



Melissa Hall, PA-C



Adam Dannehl, PA-C



Jason J. Dillard, LIMHP



Maria Diaz, PLMHP, PLADC



VOTED AGAIN...
**BEST REAL
ESTATE AGENCY**

A TRADITION OF
EXCELLENCE
SINCE
1992

LEXINGTON • JOHNSON LAKE • ELWOOD

GOTHENBURG • COZAD • DAWSON COUNTY



308.324.5581

BHAREALESTATE.COM

707 E PACIFIC ST | LEXINGTON





HISTORY

Lexington, located in Dawson County, has a very rich history. It was first established as a frontier trading post in 1860 by Daniel and Louisa Freeman. It sat along Plum Creek across from a Pony Express station south of the Platte River. They provided goods to the people traveling along the Oregon and California trails and traded with the many Indian tribes that were still in the area. Louisa writes in her diary that they got along well with the Indians though many of the white settlers did not and as a result much of Plum Creek fell victim to several attacks. The most famous being the Plum Creek Massacre of 1864 and the Turkey Leg raid of 1867. The Plum Creek Massacre has been portrayed in a book called "Captive of the

Cheyenne" written by Russ Czaplewski and published by the Dawson County Historical Society. It tells the true account of Nancy Jane Morton's capture by the Cheyenne Indians and the attack on her wagon train.

When the Union Pacific Railroad was built through Dawson County, the Freemans moved their store across from the new depot. The town was called Plum Creek. Louisa writes in her diary that their store was on the first level of their new big house and they boarded newcomers on the second level. Daniel Freeman became the first county clerk and operated the first Plum Creek newspaper called the "Dawson County Banner." Daniel threw himself into bringing people from the east to settle this

small town of Plum Creek and was often away from home. It was during one of these trips that he drowned in the Platte River. Louisa and her children remained in the Plum Creek vicinity until she died at the age of 86.

With the building of the Union Pacific Railroad and the rise of the locomotive, the small town of Plum Creek began to expand. People came from all over the United States and settled in Dawson County. I.P. "Print" Olive, a cattleman from Texas, was drawn by the vast prairies central Nebraska had to offer. His family, including his parents and a few siblings, settled in Plum Creek and quickly became a prominent family in the area. Ira Olive, Print's brother, was more of a businessman while Print and their younger brother Bob, loved the life of the cowboy and ran their cattle business. But times were changing as

more and more homesteaders settled the area and the cattleman and farmers argued over land rights. One such argument between the Olive family and two homesteaders ended with Bob Olive being shot and killed. In vengeance, Print Olive shot and hanged the homesteaders. A crime he would pay for in the Nebraska State Penitentiary. This caused quite a stir in the little town of Plum Creek and the story was later made into a book called "The Ladder of Rivers" by Harry E. Chrisman.

Plum Creek quickly became known as a "cowboy" town. Even though it continued to grow, and business was booming, the community became worried that it would soon have a bad name, and nobody would want to settle in a town filled with scalawags and gun fighters. Several of the community leaders got together and decided to rename the town. Maybe if it had a

MADELINE'S

CAFÉ & BAKERY

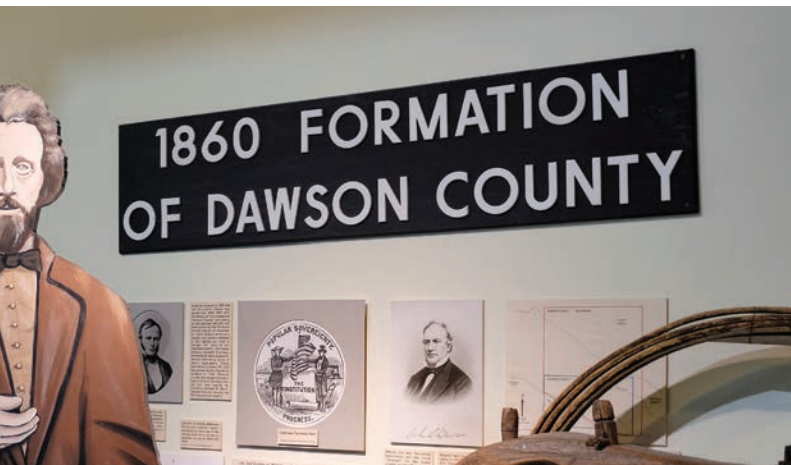
Breakfast & Lunch
 Desserts & Specialty
 Coffees
 Gluten Free Options
 501 N. Washington St.
 Lexington
 308-324-9010
 Mon-Fri 6:30am-3:30pm






Open DAILY except Christmas and New Year's Day
 Mon - Sat • 10 a.m. - 5 p.m. | Sun 1 - 5 p.m.

Just off Interstate 80 at exit 237 Lexington, Nebraska.
 308.324.6329 • 606 Heartland Road • Lexington



more “regal” name things would change. In 1889, by a write-in vote, the town name was changed to Lexington.

With the construction of a new bridge over the Platte River south of Lexington and the designation of Lexington as the county seat the community soon became a trading hub. To accommodate all the new people coming into town the community leaders once again came together to build a new luxurious hotel in 1890 called “The Cornland.” It was known as the best hotel between Omaha and Denver and offered all the latest amenities such as steam heat and gas lighting.

Throughout the years Lexington has seen many changes in business and population. Some good, some bad, but it continues to grow and draw people from a wide variety of ethnic backgrounds just as it did when it was the small town of Plum Creek.

The Overland Trails were taken over by the railroad and then came the motor car and Lexington changed yet again to accommodate the Lincoln Highway traffic. Motels, diners, and gas stations sprang up along what we now refer to as Highway 30. In the 1960s, the interstate system came through south of Lexington causing the town to grow rapidly in that direction. Overland commerce has never stopped in Lexington, it’s merely changed.

In 1973, Lexington was named an “All American City” by the National Civic League with Dawson County receiving the “All American City” award in 1993. It is the only county in Nebraska to be so honored. Lexington also has three buildings listed on the National Register of Historic Places: The Olive House at 401 E 13th St., the Dawson County Courthouse located at 7th and Washington St., and



the H.V. Temple House at 305 E. 13th St. The downtown still has brick streets and many structures have been restored, such as the Majestic Theatre, which was taken on as a project by the Lexington Public School system and is now operated by the school

and a group of volunteers.

To learn more about Lexington’s history visit the Dawson County History Museum and the Heartland Museum of Military Vehicles where the area’s history is proudly displayed!






Wireless World

Across from McDonald's

2802 Plum Creek Pkwy | Lexington, NE
308.324.2300
WirelessWorld.com



DAWSON COUNTY HISTORY MUSEUM

805 N. Taft Street • Lexington • 308-324-5340
Tues-Sat 10:00-4:00 • www.dchsmuseum.com



BUSINESS & INDUSTRY

Lexington's base industry is agriculture because of the abundance and availability of natural resources located in the area: fertile soils, groundwater and a temperate growing season.

Some of the main non-manufacturing employers are:

- City of Lexington and Dawson County
- Dawson Public Power District
- Lexington Public Schools
- Country Partners Cooperative (fertilizer, car care and agronomy divisions)
- Lexington Livestock Com-

mission Co. (livestock auction)

- Plum Creek Medical Group
- Lexington Regional Health Center
- Ridgeway Senior Living
- State of Nebraska Department of Roads

Major manufacturers and industries include:

- Eilers Machine and Welding Inc. (fabricated metal parts, welding and machine repairs)
- Tyson Fresh Meats (beef and related products for a national and export market)

- Orthman by Unverferth Manufacturing (farm implements for the national and export market)
- Darling Ingredients (meat scraps, tallow and hides)
- Designer Craft Woodworking (furniture, cabinetry for national market)
- Veetronix (communications equipment)
- Chief Ethanol Fuels, Inc. (ethanol plant)

The rest of the area's economy revolves around a variety of manufacturing firms, some which create value-added products from the region's agricultural base and some stand-alone products. The service sector includes a variety of motels and retail stores. Lexington is home to many unique specialty shops and ethnic businesses and restaurants.



TRUCK WASHOUT & TRANSPORTATION

606 E. Prospect Rd.
P.O. Box 853
Lexington, Nebraska 68850

Office: (308) 324-5790
Fax: (308) 324-3673
mrk@mrklexington.com

BUILD YOUR FUTURE AT HOME



HOME FEDERAL BANK



Member FDIC

- ✓ Home Loans
- ✓ Agricultural Loans
- ✓ Business Loans
- ✓ Personal Loans
- ✓ Checking Accounts

201 W 7th St
308.324.2331



Open an Account Online

homefederalne.bank

Annual Events

February

- » Chamber/Ag Banquet

May

- » Stock Car Races Begin

July

- » Dawson County Fair
- » Chamber of Commerce Golf Tournament
- » Lexington Tennis Tournament

August

- » Wings and Wine, Beer & Brats Event
- » High School Rodeo
- » United by Culture Festival

September

- » NSRA Finals

October

- » Trick or Treat Plum Creek

November

- » Thanksgiving Classic – Beef Show

December

- » Light up Lexington Christmas Parade
- » Santa Visits and Fire Truck Rides, downtown Lexington
- » Hometown for the Holidays-Shop Local
- » Trail of Lights at Kirkpatrick Memorial Park through the month of December

For the full
schedule, visit
www.lexcoc.com



Photos by Brian Neben

FUN & ENTERTAINMENT

There is so much to see and do in Lexington and the surrounding area!

Stock car races begin in May at the Dawson County Raceway.

The Dawson County Fair will be at the Dawson County Fairgrounds in July. Here, youth participate in life-skills contests ranging from cooking, sewing, and photography. Young ranchers compete in livestock shows showing off their sheep, hogs, cattle, dogs and even cats! The carnival is in town, and many vendors and open-class competitions take place.

August is busy with the "Wings and Wine, Beer & Brats" event at Mac's Creek Winery & Brewery later in the month.

In December, Santa travels to downtown Lexington during

the annual Light up Lexington Christmas Parade and visits with children on the first three Saturdays of the month. Fire truck rides are also

provided by the Lexington Volunteer Fire Department. The Trial of Lights display is open throughout the month of December.

DAWSON COUNTY FAIRGROUNDS



DAWSON COUNTY FAIR & RODEO
JULY 17-21, 2024

NEBRASKA STATE RODEO ASSOCIATION FINALS
SEPTEMBER 6-8, 2024

ADDITIONAL EVENTS & INFORMATION AVAILABLE
ON OUR WEBSITE: DAWSONCOUNTYFAIR.COM

1000 PLUM CREEK PARKWAY, LEXINGTON, NEBRASKA
308-324-3600 • DAWSONFAIRGROUNDS@GMAIL.COM





ATTRACTIONS

Mac's Creek Winery & Brewery

Mac's Creek Winery & Brewery is family owned and operated by the McFarlands since 2001 and is located one-half mile north of Lexington along the banks of Spring Creek. Enjoy wines, hard ciders, craft beers as well as walking trails, Creekside fire pits, and quaint cottages. Once you arrive, you'll want to stay the entire day!

Stock Car Races

Race fans can enjoy Fast Family Fun on Sundays during the summer months at the Dawson County Raceway. "Where Only the Best, Go 3 Abreast!"

Museums

Three museums showcase the intriguing history of Lexington and Dawson County. Aircraft, tanks and trucks

make up the approximately 100 vehicles restored at the Heartland Museum of Military Vehicles. Much of this museum is hands-on, with many of the vehicles available for patrons to touch or even sit in.

Historic aircraft, pioneer implements, railroad artifacts,

and tons of Lexington and Dawson County history are preserved at the Dawson County History Museum. Exhibits outside the main museum building include a rural schoolhouse, log cabin, and historic church.

The Dawson County Children's Museums is located at



701 Plum Creek Parkway in Lexington. They offer children and adults the opportunity to explore areas of science, math, social studies, and fine arts through free play, exploration, and demonstration.

Swimming, Biking, & Hiking

Enjoy the outdoors at Lexington's Family Aquatic Center, which caters to all ages with its zero-depth pool, water slide, lap pool, diving





pool, snack bar, sand volleyball and sand play area.

Hiking/biking trails are also a popular recreational activity with several trails completed in Lexington as well as the Johnson Lake Trails, located southwest of the city. Johnson Lake Trails is fast becoming a hike/bike destination for users from across the state.

Sports

Lexington has many parks where families, skate board-

ers, Frisbee, and tennis enthusiasts are all welcome. The parks inside the city limits are Kirkpatrick Memorial, Plum Creek, Oak, Arbor, and Pioneer. The Optimist Hitting Complex is an indoor hitting facility where future baseball and softball players can practice and participate in lessons and camps. The Fieldhouse and Driving Range hosts indoor soccer matches and practices as well



as a variety of other planned activities. The Orthman Community YMCA provides many programs that build a healthy spirit, mind, and body for all.

Camping

Campgrounds are available at Dawson County Fairgrounds, Groves by Riverside and multiple areas around Johnson Lake. There campers are provided with gravel or cement pads all available with electrical hookups,

showers, restrooms, a dump station and fish-cleaning stations.

Golf

There are two golf courses near Lexington: Overton, which is a 9-hole course, and Lakeside Golf Club at Johnson Lake, which is an 18-hole course, both with beautiful green landscapes and cool Nebraska breezes to make playing a joy.



THE NAUTICAL ROSE

2 Lakeview Acres Dr 14
Johnson Lake, NE 68937

Restaurant • 308-785-4031
Marina • 308-785-4032

info@thenauticalrose.com

Follow us on Social Media

 nautical-rose
 nauticalrosemarina
 Nautical Rose



Scan for a list of events



Lakeside Golf Club

CALL FOR TEE TIMES • 308-785-2818

VISITORS & NEW MEMBERS ARE ALWAYS WELCOME!

**74839 HIGHWAY 283
ELWOOD, NE 68937**

WWW.PLAYLAKESIDE.COM



THERE'S A Y IN EVERY FAMILY



A YMCA is like a home away from home. Stop by and visit your Y family when you are traveling in our area. Exercise, group classes, gymnasium, walking track and more!

ORTHMAN COMMUNITY YMCA

1207 N. Grant | Lexington
308-324-1970 | www.orthmanymca.org





SAINT ANN'S CATHOLIC CHURCH

MASS SCHEDULE
Saturday: 5:00 p.m.
Sunday: 9:00 a.m.



301 E. 6th St. • Lexington, NE • 308-324-4647 • www.lexstanns.com

PAULSEN
INC.
P.O. BOX 17 | COZAD, NE 69130
308-784-3333

Arapahoe	Gothenburg	North Platte
Broken Bow	Holdrege	McCook
Elm Creek	Indianola	Ogallala
Franklin	Lexington	

General Contractor - Concrete Drives
Feed Bunks - Septic Tanks - Sand & Gravel
Ready Mix - Bunker Blocks
Picnic Tables

FAMILY Physical Therapy & SPORTS CENTER

Excellence in Rehabilitation

- Physical, Occupational & Speech Therapy Services
- Sports Rehab / Orthopedic Rehab
- Pediatrics
- Pre & Post Surgery
- Industrial/Worksite Consultation
- Women's Health
- Neurological Rehab
- Balance & Mobility

110 W 5th St., Lexington • 324-3700
74902 Johnson Lake Dr. 26, Johnson Lake • 785-4081
Walk-ins Welcome



OVERTON VETERINARY SERVICES, LLC

Complete Veterinary and
Nutritional Services for your large
and small animals

John R. Lawton, DVM
Jared P. Walahoski, DVM
Eliot D. Linsenmeyer, DVM
Jessica A. Robb, DVM
Logan C. Murray, DVM

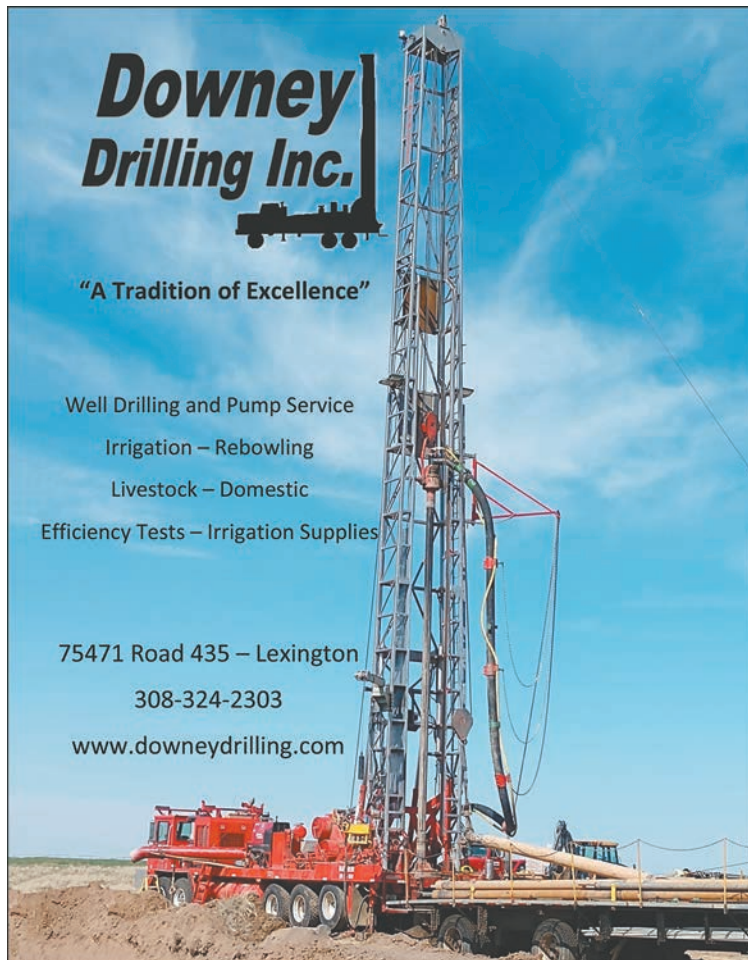
75348 Road 440 • Lexington, NE 68850
(308) 324-7202 • www.overtonvet.com

Downey Drilling Inc.

"A Tradition of Excellence"

Well Drilling and Pump Service
Irrigation – Rebowling
Livestock – Domestic
Efficiency Tests – Irrigation Supplies

75471 Road 435 – Lexington
308-324-2303
www.downeydrilling.com



GOVERNMENT

Lexington is the county seat of Dawson County. Dawson County operates under a commissioner form of government with five commissioners elected to four-year terms on a staggered basis. The commissioners represent different districts on the board. The county also has a seven-member planning commission with members appointed by the county commissioners to staggered three-year terms.

The City of Lexington operates with the Council-Manager form of government. Council members serve four-year terms. Elected at-large by the public, they in turn select one of the five as mayor for a two-year term. The Council engages the City Manager to oversee the day-to-day operations of the City.

Lexington also has a nine-member planning commission

with members appointed for three-year terms.

The Lexington Police Department has a force of 20 full-time sworn officers, and two civilian office staff. The Lexington Volunteer Fire Department shares space and emergency equipment with the Rural Fire Department, which handles emergencies on a contract basis to surrounding rural areas.

Dawson County Sheriff's Office has a staff of over 60, including deputies, jail staff, office staff and part-time employees. Regular patrol provides protection to rural and residential communities throughout the county.

The county has combined dispatch services with the communities of Lexington, Overton, Cozad, Sumner, Eddyville, Farnam and the Johnson Lake area.

Government Officials

City Manager

Joe Pepplichtsch
(308) 324-2341

City Council

John Fagot - Mayor
Jeremy Roberts
John Salem
Steve Smith
Dora Vivas

County Commissioners

Richard Zarek
PJ Jacobson
Kevin Swanson
Bill Stewart
Rod Reynolds

State Senator

Teresa Ibach
(402) 471-2805

Governor

Jim Pillen
(402) 471-2244

Lieutenant Governor

Joe Kelly
(402) 471-2256

U.S. House Representative

Congressman Adrian Smith
(308) 384-3900

U.S. Senate Representatives

Senator Deb Fischer
(402) 441-4600

Senator Pete Ricketts

(202) 224-4224



HomesteadBank
your journey. your bank.

www.homestead.bank

202 E. 7th • Lexington, NE
308-324-6358



915 Meridian • Cozad, NE
308-784-2000



HomesteadInsurance
your journey. your peace of mind.

202 E. 7th • Lexington, NE
308-324-6897

915 Meridian • Cozad, NE
308-784-2009

Disclosure: Insurance or annuity products are *Not FDIC Insured *Not Guaranteed by the Bank *Not an obligation of any Depository Institution or any affiliate of any Depository Institution *Not Insured by any Government Agency and may have investment risk including possible loss of value.

INTERESTED IN A NEW AG/HOME BUILDING?

Agricultural, Residential, Commercial,
Industrial Post/Stud Framed Buildings



Dan Heinemann

Owner

kryptonite_har@hotmail.com
Cell (308) 746-1449
Office (308) 324-7375
704 East Prospect Rd.
Lexington, NE 68850
www.hartransportationinc.com

HAR

Transportation Inc.

Building Division



Photo by Brian Neben



QUALITY EDUCATION

Our diversity is our strength.

Today Lexington Public Schools is the sixteenth largest school district in Nebraska. The district's seven schools welcome more than 3,000 students each day. But for more than a hundred years, Lexington Public Schools has been providing a world class education for students.

- Over 45 countries and 30

languages represented by the students at LPS

- Dual Language Program - Half of their daily instruction in English and the other half in Spanish (K-5th)
- Grade Level Campus Concept (Morton Elementary K-1; Sandoz Elementary 2-3; Pershing Elementary 4-5)
- Early Learning Academy for students ages

3 and 4 years old - One of the largest preschool programs in the state of Nebraska, accommodating 90% of the next year's kindergarten class.

- College Program provides students at Lexington High School seventeen (17) dual-credit college courses
- Cognia/AdvancED/NCA Accredited School District since 1914
- Graduation rate of over 90%
- College-going rate of over 70%
- Average class size to teacher ratio: 18:1
- School-Community Partnership, shared facilities with Lexington Middle School and the Orthman Community YMCA
- 32 NSAA State Activities Championships
- Largest High School Marching Band in Nebraska with around 200

members

According to Superintendent Dr. John Hakonson, "The diversity of our students and their families has enhanced Lexington by adding to an incredible international presence that you can't get in any other small central Nebraska community. Our students, in turn have prospered from the unfailing commitment and support of a dedicated LPS staff and school board, and an unbelievably generous community. Lexington is truly one of a kind and perhaps one of the best kept secrets in the state."

The mission of Lexington Public Schools is to develop capable and responsible lifelong learners. With the cooperation of family, school and community, we will prepare students for the global challenges and the opportunities of the future.

To learn more visit us at www.lexschools.org

Lexington Public Schools

Central Office

300 S. Washington
(308) 324-4681

Bryan Elementary

1003 N. Harrison St.
(308) 324-3762

Early Learning Academy

1501 Plum Creek Parkway
(308) 324-1841

Morton Elementary

505 S. Lincoln
(308) 324-3764

Sandoz Elementary

1711 N. Erie
(308) 324-5540

Lexington Middle School

1100 N. Washington
(308) 324-2349

Pershing Elementary

1104 N. Tyler
(308) 324-3765

Lexington High School

705 W. 13th
(308) 324-4691

Visit us | www.cccneb.edu

Lexington Center
1501 Plum Creek Pkwy.
Lexington, NE 68850
308-324-8480

Take Control of Your Career
Apply Now



HEALTH CARE

Residents of Lexington and Dawson County have access to numerous, quality health care facilities and services.

From providing multilingual support to medical specialists, Plum Creek Medical Group is committed to improving the way you're cared for. As your independent, physician-owned health care provider, they ensure health care has possibilities by offering the best treatment options available. Some of the services include preventative care, illness, injury, and disease management. They have clinics located in Lexington,

Eustis and Johnson Lake to service their patients. Their care team works with you for a lifetime of good health!

Lexington Regional Health Center (LRHC) is a Critical Access Hospital employing more than 260 passionate, dedicated people. Lexington Regional is a progressive healthcare facility dedicated to providing exceptional, cost-effective care to Lexington and the surrounding areas. More than just a hospital, Lexington Regional is also home to an emergency room, Family Medicine Specialists Clinic, a state-of-the-art

outpatient services and surgery center, Rehabilitation Services, Bertrand Clinic and Elwood Clinic. With over 15 visiting specialists regularly seeing patients at the Outpatient Services Center, comprehensive care is available without having to travel. Specialties include general surgery, cardiology, nephrology, obstetrics & gynecology, podiatry, urology, orthopedics, pain management, wound care, spinal surgery, and more can be seen in the same facility as your primary care provider. Lexington Regional is proud to offer family medicine for families and patients of all ages. The Family Medicine Specialists Clinic is open every day of the week with extended hours to meet your needs. Lexington Regional Health Center is honored to care for you and

your loved ones!

Ridgeway Senior Living gives senior residents the choices they need to create their ideal senior living. Conveniently located in Lexington, we are close to hospitals and physicians. Residents have plenty of entertainment options nearby as well. Lexington has plenty of events for seniors looking for some excitement. They provide independent and assisted living services to make sure seniors get the most out of their retirement years. The community has numerous apartments available in several styles. There are several floor plans to choose from, with options for handicap accessible add-ons and other features. They also provide 24-hour staff that are always available when needed.

Trinity Lutheran Church

WORSHIP
Saturday 6:00 p.m. & Sunday 10:00 a.m.

SUNDAY SCHOOL & BIBLE CLASS
Sunday 8:45 a.m.

Pastor Rob Kuefner

205 E. 7th St. • Lexington, NE 68850
(308) 324-4341 • www.tlcllex.org

Primary Electric, Inc.

For All Your Electrical, Heating, And Air Conditioning Needs.

939 W. 7th • Lexington, NE
308-324-2418
primary.electric@yahoo.com • primaryelectricne.com

AD CONTENTS

BHA Real Estate.....	9
Byrns Floorcovering.....	4
Central Community College.....	18
City of Lexington.....	31
Dan's Sanitation	22
Darling Ingredients	24
Dawson County Agri Society	13
Dawson County History Museum	11
Doran Post.....	26
Downey Drilling, Inc.....	16
Eustis Body Shop	23
Family Physical Therapy	16
Farm Bureau Insurance.....	5
Fat Dogs.....	6
HAR Transportation Building Division.....	17
Heartland Chevrolet.....	8
Heartland Museum of Military Vehicles	10
Home Federal Bank.....	12
Homestead Bank & Insurance.....	17
Kirk's Nebraskaland.....	24
Lakeside Golf Club	15
Lexington Convention & Visitor's Bureau	27, 32
Lexington Regional Health Center.....	2
Loudon's	22
Mac's Creek Winery & Brewery.....	14
Madeline's Cafe & Bakery	10
Majestic Theatre	14
MRK Inc.....	12
Nautical Rose	15
Nebraskaland Tire	5
O'Hanlon Seed, Inc.	25
Overton Veterinary Services, LLC	16
Paulsen, Inc.....	16
Platte Valley Auto.....	8
Plum Creek Dentistry.....	6
Plum Creek Market Place.....	25
Plum Creek Medical Group	9
Primary Electric	19
St. Ann's Catholic Church.....	16
TEC Equipment	23
The Home Agency	20
Titan Machinery	28
Trinity Lutheran Church	19
Trius Federal Credit Union	4
Two Rivers Public Health.....	16
Tyson Foods, Inc.	21
Wireless World	11
YMCA	15

THE HOME AGENCY

thehomeagency.com

Voted Best Insurance
Agency 2023



Jim Baldonado, Voted
Best Insurance Agent
2023



BUSINESS DIRECTORY

A

Arby's
2508 Plum Creek Pkwy
Lexington, NE 68850
(308) 324-4918

Around the Block Catering,
LLC
75905 Rd. 431
Lexington, NE 68850
(308) 325-6547

ATC Communications
P.O. Box 300
Arapahoe, NE 68922
(308) 962-7298

B

B & B Veterinary Services
3104 N. Adams
Lexington, NE 68850
(308) 324-3411

Barney Insurance
510 E. 5th St.
Lexington, NE 68850
(308) 324-6224

Batie Cattle Co.
43590 Rd. 761
Lexington, NE 68850
(308) 325-5000

BHA Real Estate LLC
709 E. Pacific
Lexington, NE 68850
(308) 324-5581

Bill Stewart
2701 N. Adams
Lexington, NE 68850
(308) 324-2764

Bill's Volume Sales, Inc.
75470 Rd. 435
Lexington, NE 68850
(308) 324-7409

Black Hills Energy
610 Central Ave
Kearney, NE 68847
(308) 380-8634

Bob's True Value
1601 Plum Creek Pkwy
Lexington, NE 68850
(308) 324-9945

Bomgaars
1701 Plum Creek Pkwy
Lexington, NE 68850
308-324-4231

Burger King
2505 Plum Creek Pkwy
Lexington, NE 68850
(308) 324-3679

Busy Bones Butcher, LLC
75829 Rd. 426
Cozad, NE 69130
(308) 325-9135

C

Calvary Assembly of God
1304 N Adams St.
Lexington, NE 68850
308-324-5310

Camp Comeca
75670 Rd. 417
Cozad, NE 69130
(308) 784-2808

Car-Bar Cattle Co.
43692 Rd. 758
Lexington, NE 68850
(308) 324-2825

Center for Rural Affairs
145 Main St.
Lyons, NE 68036
(402) 687-2100

Central Community College
1501 Plum Creek Pkwy
Lexington, NE 68850
(308) 324-8480

Tyson Foods is proud to be a part
of the Lexington community.



tysonfoods.com

Central NE Public Power & Irrigation
415 Lincoln St.
Holdrege, NE 68949-0740
(308) 995-8601

Central Nebraska Human Trafficking & Immigration Outreach
513 N. Grant #3
Lexington, NE 68850
(308) 325-2295

Central Valley Irrigation
1801 Plum Creek Pkwy
Lexington, NE 68850
(308) 324-3434

Chief Ethanol Fuels, Inc.
1111 E. Industry Drive
Lexington, NE 68850
(308) 217-7100

Church of God of Prophecy/
Iglesia de Dios de la Profecia
1011 N. Lincoln
Lexington, NE 68850
(308) 325-9899

City of Lexington
406 E. 7th St.
Lexington, NE 68850
(308) 324-2341

Clay Patton – Marshall Land Brokers & Auctioneers
75399 Rd. 431
Lexington, NE 68850
(719) 760-0747

Coffee Cottage
2703 Plum Creek Pkwy
Lexington, NE 68850
(308) 324-0400

Comfort Inn
2810 Plum Creek Pkwy
Lexington, NE 68850
(308) 324-3747

Community Action Partnership of Mid-NE
931 W. 7th St.
Lexington, NE 68850
(308) 324-4219

Computer Assistance
75137 Hwy 283
Lexington, NE 68850
(308) 324-6094

Contryman Associates, PC
707 E. Pacific Ave.
Lexington, NE 68850
(308) 324-2368

Country Partners Cooperative Agronomy
1306 E. Walnut
Lexington, NE 68850
(308) 324-2000

Country Partners Cooperative Car Care Center
711 E. Pacific Ave.
Lexington, NE 68850
(308) 324-2000

Cricket Wireless
508 N. Lincoln
Lexington, NE 68850
(308) 985-1445

Crossroads Mission Avenue
907 W. 8th St.
Lexington, NE 68850
(308) 378-3502

Culligan
304 E. 5th St.
Cozad, NE 69130
(308) 324-8888

D
Dan's Sanitation, Inc.
43566 Rd. 754
Lexington, NE 68850
(308) 324-6693

Darling Ingredients, Inc.
1208 Walnut St.
Lexington, NE 68850
(308) 324-5563

Darr Feedlot, Inc.
42826 Rd. 759
Cozad, NE 69130
(308) 324-2363

Dave Stenberg
403 Cherokee Rd.
Lexington, NE 68850
(308) 324-2262

Dawson County Children's Museum
701 Plum Creek Pkwy
Lexington, NE 68850
(308) 325-6164

Dawson County Fairgrounds
1000 Plum Creek Pkwy
Lexington, NE 68850
(308) 324-3600

Dawson County History Museum
805 N. Taft
Lexington, NE 68850
(308) 324-5340

Dawson County Raceway
1000 S. Plum Creek Pkwy
Lexington, NE 68850

Dawson Public Power District
75191 Rd. 433
Lexington, NE 68850
(308) 324-2386

Days Inn
2506 Plum Creek Pkwy
Lexington, NE 68850
(308) 324-6440

DC Climate Control
309 Maple St.
Cozad, NE 69130
(308) 325-3986

Denker, Inc.
43317 Rd. 761
Lexington, NE 68850
(308) 324-3051

Designer Craft Woodworking, Inc.
601 E. Commerce Rd.
Lexington, NE 68850
(308) 324-5825

Dian Kraus
75394 Rd. 427
Lexington, NE 68850

Dollar Fresh
1001 Plum Creek Pkwy
Lexington, NE 68850
(308) 324-9972

Doran Post & Associates, Inc.
935 W. 7th St.
Lexington, NE 68850
(308) 324-6992

SERVING DAWSON COUNTY

**SINCE
1960**



**Dan's Sanitation
324-6693 • Lexington**

LOUDON'S
**MEN'S BIG & TALL
DRESS CLOTHES**

Your one stop shop
for all your western
wear needs for the
entire family!

**LOUDON'S
Buggy Whip**

504 N. Washington • Lexington • 308.324.3451

Downey Drilling, Inc.
75471 Rd. 435
Lexington, NE 68850
(308) 324-2303

Edward Jones/Garth Mins &
Keenan Kremke
505 N. Jackson
Lexington, NE 68850
(308) 324-9043

Eustis Body Shop
609 N. Adams
Lexington, NE 68850
(308) 324-6812

Fill-n-Chill
123 E. Pacific
Lexington, NE 68850
(308) 324-5860

E
Eagle Run Apartments/The
Philmoore Company
809 N. Erie
Lexington, NE 68850
(308) 324-6046

Eilers Machine & Welding,
Inc.
600 E. Commerce Rd.
Lexington, NE 68850
(308) 324-3751

Express Laundry
210 Frontier St., Ste. 6
601 W. Pacific
Lexington, NE 68850
(308) 325-0677

First Interstate Bank
110 W. 7th St.
Lexington, NE 68850
(308) 324-5691

Eakes Office Solutions
2401 Ave. A
Kearney, NE 68845
(308) 234-2538

El Rancho Viejo
2307 Plum Creek Parkway
Lexington, NE 68850
(308) 324-7265

F
Family Physical Therapy &
Sports Center
110 W. 5th St.
Lexington, NE 68850
(308) 324-3700

First Presbyterian Church
801 N. Lincoln
Lexington, NE 68850
(308) 324-5507

Edgewater Insurance & Real
Estate
525 N. Washington St.
Lexington, NE 68850
(308) 324-4641

Elwood Chamber of
Commerce
PO Box 92
Elwood, NE 68937
(308) 785-2480

Farm Bureau Financial
Services - Chase Wolf
411 E. Pacific
Lexington, NE 68850
(308) 324-6355

First United Methodist Church
201 E. 8th St.
Lexington, NE 68850
(308) 324-2397

Edward Jones Investments/
Dan Clark
709 N. Washington St.
Lexington, NE 68850
(308) 324-7424

Equus Workforce Services
1308 N. Adams
P O Box 801
Lexington, NE 68850
(308) 324-9907

Fat Dogs
2607 Plum Creek Pkwy
Lexington, NE 68850
(308) 532-9126

Five Star Flooring
111 E. 5th St.
Lexington, NE 68850
(308) 324-3052

FRAE, Inc.
608 W. Vine
Lexington, NE 68850
(308) 324-4018



NEW & USED TRUCK SALES, ALL-MAKES PARTS & SERVICE

VOLVO



308-324-7759
TECEQUIPMENT.COM/LEXINGTON

WE SPECIALIZE IN KEEPING YOU AND YOUR FAMILY SAFE.

- ✓ I-CAR Gold Class Certified
- ✓ OEM Factory Parts
- ✓ FREE Loaner Cars



Eustis
BODY SHOP

LOCATED AT 609 NORTH ADAMS
(308) 324-6812 | eustisbodyshop.com

G
Go Home Realty
114 W. 6th St., Ste. G
Lexington, NE 68850
(308) 651-0938

Goodwill Industries of Greater
Nebraska Employment &
Career Services
2401 Plum Creek Pkwy
Lexington, NE 68850
(308) 324-7366

Great Plains Communications
7310 2nd Ave.
Kearney, NE 68847
(888) 343-8014

Groves By Riverside
3016 Plum Creek Pkwy
Lexington, NE 68850
(605) 310-6209

GROW Nebraska Foundation
421 W. Talmadge St.
Kearney, NE 68845
(308) 338-3520

H
H.O.M.E.S
1304 N. Adams
Lexington, NE 68850
(308) 325-7610

HAR Transportation
704 E. Prospect Rd.
Lexington, NE 68850
(308) 324-7375

Healing Hearts and Families
207 E. 6th St.
Lexington, NE 68850
(308) 870-2630

Heartland Chevrolet
1111 Plum Creek Pkwy
Lexington, NE 68850
(308) 324-2306

Heartland Museum of Military
Vehicles
606 Heartland Rd.
Lexington, NE 68850
(308) 324-6329

Heldt, McKeone & Copley
710 N. Grant
Lexington, NE 68850
(308) 324-5151

Holdrege Irrigation, Inc.
43248 US 283
Lexington, NE 68850
(308) 324-2121

Holiday Inn Express
2605 Plum Creek Pkwy
Lexington, NE 68850
(308) 324-9900

Home Federal Bank
201 W. 7th St.
Lexington, NE 68850
(308) 324-2331

Home Instead Senior Care
1007 N. Jeffers
North Platte, NE 69101
(308) 532-3960

Homestead Bank
202 E. 7th St.
Lexington, NE 68850
(308) 324-6358

I
Immigrant Legal Center
2401 Plum Creek Pkwy, Ste.
2
Lexington, NE 68850
(402) 898-1349

J
Jerrold Remmenga, DDS, PC
903 N. Grant
Lexington, NE 68850
(308) 324-6165

JK Energy Consulting
74408 Rd. 433
Smithfield, NE 68976
(402) 440-0227

JMS Millwright & Repair
43351 Rd. 760
Lexington, NE 68850
(308) 324-2499

Johnson Lake Area Chamber
of Commerce
PO Box 244
Lexington, NE 68850
(308) 325-1409

Johnson Lake Flying Service
1501 N. Airport Rd.
Lexington, NE 68850
(308) 785-2100

Jones Plumbing & Heating,
Inc.
811 W. 7th St.
Lexington, NE 68850
(308) 324-3333

K
KBBN-95.3FM & KCNI 1280-
AM
79895 Hwy 2
Broken Bow, NE 68822
(308) 872-5881

Keep Lexington Beautiful
801 W. Vine
Lexington, NE 68850
(308) 325-6707

Kirk's Nebraskaland
Restaurant
3002 Plum Creek Pkwy
Lexington, NE 68850
(308) 324-6641

Kloch Counseling
101 W. 8th St., Ste. A
Lexington, NE 68850
(308) 324-7017

KRVN AM & FM
1007 Plum Creek Pkwy
Lexington, NE 68850
(308) 324-2371

L
L2 for Kids, Inc.
76311 Rd. 416
Willow Island, NE 69171
(308) 530-0441

Lakeside Golf Club
74839 Hwy 283
Elwood, NE 68937
(308) 785-2818

Landmark Implement
75482 Rd. 435
Lexington, NE 68850
(308) 324-4639



**Burgers, Beer & The
Best Wings in Town.**

Same **Great** food, **New** dining experience.

Breakfast • Lunch • Dinner

Sports Bar Now Open at 11:00 A.M. Saturday & Sunday

308-324-6641 • kirsrestaurant.com • Like us on Facebook 



DEAD STOCK REMOVAL SERVICE

GRAND ISLAND
1-800-652-9381

PALISADE
1-800-652-9320

LEXINGTON
1-800-652-9334

Larry Reynolds
74898 Rd. 435
Lexington, NE 68850
(308) 325-3450

Learning Adventures -
Lexington
201 E. 8th St.
Lexington, NE 68850
(308) 746-7009

Levander's Body Shop
2809 Heartland Rd.
Lexington, NE 68850
(308) 217-0695

Lexington Airport Authority
1501 N. Airport Rd.
Lexington, NE 68850
(308) 324-8770

Lexington Area Chamber of
Commerce/Visitor's Bureau
1501 Plum Creek Pkwy, Ste.
2A
Lexington, NE 68850
(308) 324-5504

Lexington Area United Way
118 E. 6th St., Ste. 4A
Lexington, NE 68850
(308) 324-5774

Lexington Clipper-Herald
114 W. 5th St.
Lexington, NE 68850
(308) 324-5511

Lexington Community
Foundation
607 N. Washington St.
Lexington, NE 68850
(308) 324-6704

Lexington Family Dentistry
1220 N. Adams
Lexington, NE 68850
(308) 324-7422

Lexington Family Eyecare
801 N. Grant
Lexington, NE 68850
(308) 324-5631

Lexington Feeders Service
200 S. Washington St.
Lexington, NE 68850
(308) 324-3311

Lexington Grand Generation
Center
407 E. 6th St.
Lexington, NE 68850
(308) 324-2498

Lexington Housing Authority
609 E. 3rd St.
Lexington, NE 68850
(308) 324-4633

Lexington Livestock Market
300 Plum Creek Pkwy
Lexington, NE 68850
(308) 324-4663

Lexington Public Library
907 N. Washington St.
Lexington, NE 68850
(308) 324-2151

Lexington Public Schools
300 S. Washington St.
Lexington, NE 68850
(308) 324-4681

Lexington Regional Health
Center
1201 N. Erie
Lexington, NE 68850
(308) 324-5651

Lexington Rotary Club
P.O. Box 781
Lexington, NE 68850

Lutheran Family Services
200 W. 7th St.
Lexington, NE 68850
(308) 324-2312

M
Mac's Creek Winery &
Brewery
43315 Rd. 757
Lexington, NE 68850
(308) 324-0440

Mac's Short Stop
1114 N. Adams
Lexington, NE 68850
(308) 324-1703

Plum Creek Market Place

Gift & Flowers

**Good Food,
Great Prices &
Awesome People**
1411 Plum Creek Pkwy
Lexington, NE
308-324-2327

O'HANLON *Seed & Irrigation*

- COVER CROPS
- CUSTOM FIELD WORK
- AGRONOMY
- PIVOT SALES & SERVICE
- PRECISION PLANTING®
NEW BUILDS & UPGRADES

921 WEST 7TH STREET
LEXINGTON, NE 68850
308-324-4567

DUSTIN.OHANLON@GMAIL.COM

Channel
Seedsmanship At Work



ZIMMATIC™
BY LINDSAY

Madeline's Cafe & Bakery
501 N. Washington St.
Lexington, NE 68850
(308) 324-9010

Majestic Theatre
615 N. Washington St.
Lexington, NE 68850
(308) 746-7348

Make-A-Wish Nebraska
412 E. 25th St., Ste. D
Kearney, NE 68847
(308) 234-6612

Mary Kay - Elissa Martin
75845 Rd. 438
Lexington, NE 68850
(402) 205-2323

McChesney, Martin and
Sagehorn, P.C.
115 W. 6th St.
Lexington, NE 68850
(308) 324-5575

McDonald's of Lexington, LLC
2706 Plum Creek Pkwy
Lexington, NE 68850
(308) 324-2922

Mead Lumber Co., Inc.
700 S. Plum Creek Pkwy
Lexington, NE 68850
(308) 324-5636

Mike Mandelko, D.D.S.
101 W. 8th St., Ste. B
Lexington, NE 68850
(308) 324-5661

Mike's Sprinkler Service
75823 Rd. 436
Lexington, NE 68850
(308) 325-1813

MRK, Inc.
606 E. Prospect Rd.
Lexington, NE 68850
(308) 324-5790

N
NAPA Auto Parts (S & W)
113 E. 5th St.
Lexington, NE 68850
(308) 324-2313

Nautical Rose
2 Lakeview Acres, Dr. #14
Johnson Lake, NE 68937
(308) 785-4031

Nebraska Department of
Labor
1501 Plum Creek Pkwy, Ste.
3
Lexington, NE 68850
(308) 324-2064

Nebraska Public Power
District
P.O. Box 2170
Kearney, NE 68847
(877) 275-6773

Nebraskaland Tire
3004 Plum Creek Pkwy
511 Plum Creek Pkwy
Lexington, NE 68850
(308) 324-6374

Nelson's Furniture & Floor
Covering
508 N. Washington St.
Lexington, NE 68850
(308) 324-6406

O
O'Hanlon Seed, Inc. &
Shamrock Ag. Consult
921 W. 7th St.
Lexington, NE 68850
(308) 324-4567

Optimist of Lexington
P.O. Box 355
Lexington, NE 68850
(308) 324-5294

OPTK Networks
3900 NW 12th St., Ste. 100
Lincoln, NE 68521
(402) 875-6325

Orthman by Unverferth
75765 Rd. 435
Lexington, NE 68850
(308) 324-4654

Overton Veterinary Services
75348 Rd. 440
Lexington, NE 68850
(308) 324-7202



Doran
Post
Agency

Insurance & Real Estate

FROM THE FIELD, TO THE FRONT DOOR
WE'VE GOT YOU COVERED.

**CROP INSURANCE • REAL ESTATE
FARM • HOME & AUTO INSURANCE**

**935 W. 7th • Lexington, NE
308.234.6992 • info@doranpost.com**

www.doranpost.com

P

Pam Trampe
709 E. Pacific
Lexington, Nebraska 68850
(308) 325-5264

Parent Child Center
1001 N. Washington St.
Lexington, NE 68850
(308) 324-2336

Parkview Baptist Church
803 W. 18th St.
Lexington, NE 68850
(308) 324-4410

Paulsen, Inc.
43434 Heartland Rd.
Lexington, NE 68850
(308) 324-3953

Paw Prints in Dawson Co
2012 Meridian Ave.
Cozad, NE 69130
(308) 325-9680

Pinnacle Bank
410 N. Washington St.
Lexington, NE 68850
(308) 324-5686

Platte Valley Auto
400 N. Jefferson
Lexington, NE 68850
(308) 324-5619

Platte Valley Communications
211 E. 6th St.
Lexington, NE 68850
(308) 324-6556

Plum Creek Dentistry
302 E. 6th St., Ste. 3
Lexington, NE 68850
(308) 324-5551

Plum Creek Market Place
1411 Plum Creek Pkwy
Lexington, NE 68850
(308) 324-2327

Plum Creek Medical Group
1103 Buffalo Bend
Lexington, NE 68850
(308) 324-6386

Prairie Heights Apartments
605 W. Cedar St.
Lexington, NE 68850
(308) 380-2591

Pro-Printing & Graphics
119 W. 5th St.
North Platte, NE 69101
(308) 532-1111

R

Reynolds-Love Funeral Home
106 W. 8th St.
Lexington, NE 68850
(308) 324-2221

Rickey's Removal, LLC
1315 Ave. H
Cozad, NE 69130
(308) 325-1963

Ridgeway Senior Living
1811 Ridgeway
Lexington, NE 68850
(308) 378-3800

Roberts Cattle Company
75590 Rd. 436
Lexington, NE 68850
(308) 324-5611

Runza Lexington
2510 Plum Creek Pkwy
Lexington, NE 68850
(308) 746-7234

S

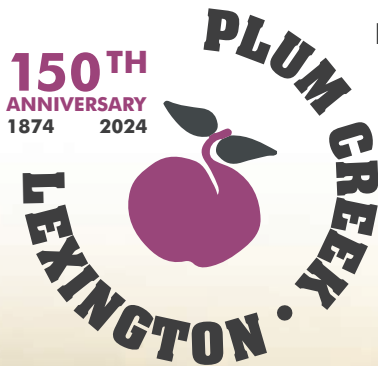
Sam's Club
1510 N. Diers Ave.
Grand Island, NE 68801
(308) 384-0622

Scooter's Coffee
2801 Plum Creek Pkwy
Lexington, NE 68850
(308) 320-7735

Service Master of Mid-Nebraska
302 E. Frontier St.
Lexington, NE 68850
(308) 324-3072

Shotkoski Hay Co.
1809 Plum Creek Pkwy
Lexington, NE 68850
(308) 324-4193

Sign Pro/Bennett Advertising
Specialties
112 W. 6th St.
Lexington, NE 68850
(308) 324-8000



In 2024, the City of Lexington will be celebrating its 150th anniversary. Our sesquicentennial celebration (150 years) of people from all walks of life settling in Lexington and finding "A Better Life" includes year-long festivities to mark this very special occasion and recognize our community's heritage, accomplishments, and community pride.

A special weekend of celebrations will be held June 28-30, 2024, and will be designed to engage and celebrate all our proud citizens. Together, we are generations of those who came before us, as well as our diverse community, whose dedication and innovation have built the City of Lexington into the community we are all so very proud to call home.

Celebrating
150 Years

St. Ann's Catholic Church
301 E. 6th St.
Lexington, NE 68850
(308) 324-4647

Strike & Spare Bowl & Sports Bar
1408 N. Adams
Lexington, NE 68850
(308) 324-4675

Subway/Goodrich
507 W. Pacific
Lexington, NE 68850
(308) 324-5761

Super 8 Motel
104 E. River Rd.
Lexington, NE 68850
(308) 324-7434

T
T.L. Sund Constructors, Inc.
707 N. Ontario
Lexington, NE 68850
(308) 324-5186

T.O. Haas Tire
1001 W. Pacific
Lexington, NE 68850
(308) 324-3900

TEC Equipment
602 E. Frontier St.
Lexington, NE 68850
(308) 324-7759

The H.O. Smith Company
A Nebraska Company Agency
104 E 7th St.
Lexington, NE 68850
(308) 324-2216

Three 21 Tavern
112 E. 5th St.
Lexington, NE 68850
(308) 746-7181

Titan Machinery, Inc.
75481 Rd. 435
Lexington, NE 68850
(308) 324-5553

Trinity Lutheran Church
205 E. 7th St.
Lexington, NE 68850
(308) 324-4341

Trius Federal Credit Union
115 Cattleman's Dr.
Lexington, NE 68850
(308) 324-1966

Two Rivers Public Health Department
516 W. 11th St. Ste. 108B
Kearney, NE 68845
(308) 233-3100

Tyson Foods, Inc.
1500 Plum Creek Pkwy
Lexington, NE 68850
(308) 324-8205

U
Union Pacific Railroad
1400 Douglas St.
Stop 1560
Omaha, NE 68105
(303) 405-5010

United by Culture Media
516 N. Grant, Ste. B
Lexington, NE 68850
(402)318-3689

United Country – Ag Team
Land Brokers
2802 Plum Creek Pkwy, Ste. E
Lexington, NE 68850
1-800-785-2528

V
Viaero Wireless
210 Frontier St., Ste. 5
Lexington, NE 68850
(308) 651-1111

Viewpoint Farm, Inc.
43676 Rd. 756
Lexington, NE 68850
(308) 324-4425

Viterra USA Grain
302 E. Pacific
Lexington, NE 68850
(308) 217-7000

VVS, Inc.-Canteen
310 W. Hwy 30
Cozad, NE 69130
(308) 784-2164


W
Wal-Mart Stores, Inc.
200 Frontier St.
Lexington, NE 68850
(308) 324-7427

Walking J
43646 Rd. 749
Lexington, NE 68850

Weathercraft Roofing Co.
906 W. 8th St.
Lexington, NE 68850
(308) 534-3480

Wireless World-Verizon
2802 Plum Creek Pkwy, Ste. A
Lexington, NE 68850
(308) 324-2300

Y
YMCA-Orthman Community
YMCA
1207 N. Grant
Lexington, NE 68850
(308) 324-1970



TITAN
MACHINERY
Power & Precision to Grow®

75481 Road 435 • Lexington, NE 68850
308-324-5553 • 800-248-5523



LEXINGTON CHURCHES

Berean Bible Church

210 W. 7th Street
(308) 324-3095

Buffalo Grove Presbyterian

76199 Rd. 429
(308) 324-4211

Calvary Assembly of God

1304 N. Adams
(308) 324-5310

Camino de Vida

810 S. Washington Street
(308) 746-2431

Church of Christ

1211 N. Tyler Street
(308) 324-3191

Church of Christ North Side

704 E. 6th Street
(308) 324-4182

Church of God of Prophecy/Iglesia de Dios de la Profecia

1011 N. Lincoln
Lexington, NE 68850
(308) 325-9899

Church of Jesus Christ of Latter-day Saints

1407 W. 13th Street
(308) 324-6840

Evangelical Free Church

810 S. Washington Street
(308) 324-3825

First Baptist Church

713 Monroe Street
(308) 324-2909

First Lutheran Church

42957 Buffalo Road
(308) 324-8715

First Presbyterian Church

801 N. Lincoln Street
(308) 324-5507

First United Methodist Church

201 E. 8th Street
(308) 324-2397

Grace Lutheran ELCA

105 E. 17th
(308) 324-2496

Iglesia Asambleas de Dios Filadelfia

501 S. Madison Street
(308) 325-9909

Iglesia de Dios Camino de Santidad

500 N. Monroe Street
(308) 324-8764

Iglesia Dios Es Amor

521 N. Madison
(308) 324-7960

Lexington Christian Church

1206 N. Erie Street
(308) 324-3084

Masjidul Rahma of Lexington

114 W. Fifth Street

Parkview Baptist

803 W. 18th Street
(308) 324-4410

Salon Del Reino De Los Teshgos De Jehova

705 20th Street

St. Ann's Catholic Church

301 E. 6th Street
(308) 324-4647

St. John's Lutheran Church

42650 Road 764, Cozad, NE
(308) 784-3063

St. Peter's in the Valley Episcopal

905 E. 13th Street
(308) 324-6199

Trinity Lutheran Church LCMS

205 E. 7th St.
(308) 324-4341



SHOP LOCALLY

***Lexington Chamber
Bucks are accepted
by these participating
businesses.***

- Arby's
- Around the Block Catering, LLC
- ATC Communications
- B and B Veterinary Services
- Barney Insurance
- Bill's Volume Sales, Inc.
- Black Hills Energy
- Bob's True Value
- Bomgaars
- Burger King
- Busy Bones Butcher, LLC
- City of Lexington
- Coffee Cottage
- Comfort Inn
- Computer Assistance
- Contryman Associates, PC
- Country Partners Cooperative
- Cricket Wireless
- Crossroads Mission Avenue
- Culligan
- Dan's Sanitation, Inc.
- Dawson County Children's Museum
- Dawson County History Museum
- Dawson Public Power District

- Days Inn
- DC Climate Control
- Doran Post & Associates, Inc.
- Dollar Fresh
- Downey Drilling, Inc.
- Eakes Office Solutions
- Edgewater Insurance & Farm Management
- Edward Jones Investments/Dan Clark
- Edward Jones/Garth Mins
- Eilers Machine & Welding, Inc.
- El Rancho Viejo
- Eustis Body Shop
- Express Laundry
- FRAE, Inc.
- Family Physical Therapy & Sports Center
- Farm Bureau Financial Services - Chase Wolf
- Fat Dogs
- Fill-n-Chill
- Five Star Flooring
- Goodwill Industries of Greater Nebraska Employment and Career Services
- Great Plains Communication
- Healing Hearts and Families
- Heartland Chevrolet
- Heartland Museum of Military Vehicles
- Holiday Inn Express

- Jerry Remmenga, D.D.S., PC
- JMS Millwright & Repair
- Jones Plumbing & Heating, Inc.
- Kirk's Nebraskaland Restaurant
- Kloch Counseling
- Lakeside Golf Club
- Landmark Implement
- Learning Adventures – Lexington
- Levander's Body Shop
- Lexington Clipper-Herald
- Lexington Family Dentistry
- Lexington Family Eyecare
- Lexington Feeders Service
- Lexington Grand Generation Center
- Lexington Livestock Market
- Lexington Public Library
- Lexington Regional Health Center
- Lutheran Family Services
- Mac's Creek Winery & Brewery
- Mac's Short Stop
- Madeline's Cafe & Bakery
- Majestic Theatre
- Mary Kay - Elissa Martin
- McChesney, Martin and Sagehorn, P.C.
- McDonald's of Lexington, LLC
- Mead Lumber Co., Inc.
- Mike Mandelko, D.D.S.
- Mike's Sprinkler Service
- NAPA Auto Parts (S & W)
- Nautical Rose
- Nebraska Public Power District
- Nebraskaland Tire

- Nelson's Furniture & Floor Covering
- O'Hanlon Seed, Inc. & Shamrock Ag. Consult.
- OPTK Networks
- Overton Veterinary Services
- Paulsen, Inc.
- Platte Valley Auto
- Platte Valley Communications
- Plum Creek Dentistry
- Plum Creek Market Place
- Plum Creek Medical Group
- Pro Printing & Graphics
- Reynolds-Love Funeral Home
- Runza – Lexington
- Sam's Club
- Scooter's Coffee
- Service Master of Mid-Nebraska
- Sign Pro/Bennett Advertising Specialties
- Strike & Spare Bowl Sports Bar, LLC
- Subway/Goodrich
- Super 8 Motel – Lexington
- TEC of Lexington
- T.L. Sund Constructors, Inc.
- T.O. Haas Tire
- Three 21 Tavern
- Titan Machinery, Inc.
- Trius Federal Credit Union
- United by Culture Media
- Viaero Wireless
- VVS, Inc. - Canteen
- Weathercraft Roofing Co.
- Wireless World - Verizon
- YMCA - Orthman Community YMCA

Veterans Memorial Pavilion
Kirkpatrick Memorial Park



Lexington City Parks



Optimist Rec Complex & Indoor Hitting Facility
1601 W. 13th



Lexington Grand Generation Center
407 E. 6th



Lexington Family Aquatic Center
11th & Monroe
Open Memorial Weekend through August



Lexington
Racquet
Facility



Lexington Fieldhouse
Recreation Center
1502 N. Airport Rd.



CITY OF
Lexington
NEBRASKA

Parks & Recreation Department

P.O. Box 70 • Lexington, NE 68850 • 308.324.2498 • www.cityoflex.com



This is our Community.

Lexington
NEBRASKA

Photo: Arturo Banderas

Antiques • Lodging • Unique Dining
Museums • Winery • Brewery • Camping
Recreation • Events • Celebrations

LEXINGTON
a better life

Lexington Convention & Visitor's Bureau
308-324-5504 • lexcoc.com

Paid for by Lexington CVB